



# DCT rabbit pAb

Cat No.:ES8594

For research use only

## Overview

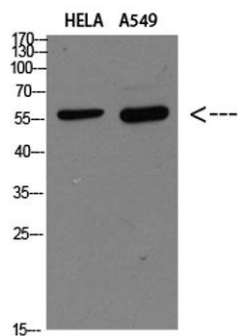
<b>Product Name</b>	DCT rabbit pAb
<b>Host species</b>	Rabbit
<b>Applications</b>	WB;ELISA
<b>Species Cross-Reactivity</b>	Human;Mouse;(93%)
<b>Recommended dilutions</b>	WB 1:500-2000, ELISA 1:10000-20000
<b>Immunogen</b>	Synthetic peptide from human protein at AA range: 171-244
<b>Specificity</b>	The antibody detects endogenous DCT
<b>Formulation</b>	Liquid in PBS containing 50% glycerol, 0.5% BSA and 0.02% sodium azide.
<b>Storage</b>	Store at -20°C. Avoid repeated freeze-thaw cycles.
<b>Protein Name</b>	DCT
<b>Gene Name</b>	DCT TYRP2
<b>Cellular localization</b>	Melanosome membrane ; Single-pass type I membrane protein . Melanosome . Proper trafficking to melanosome is regulated by SGSM2, ANKRD27, RAB9A, RAB32 and RAB38. .
<b>Purification</b>	The antibody was affinity-purified from rabbit antiserum by affinity-chromatography using epitope-specific immunogen.
<b>Clonality</b>	Polyclonal
<b>Concentration</b>	1 mg/ml
<b>Observed band</b>	59kD
<b>Human Gene ID</b>	1638
<b>Human Swiss-Prot Number</b>	P40126
<b>Alternative Names</b>	L-dopachrome tautomerase (DCT) (DT) (EC 5.3.3.12) (L-dopachrome Delta-isomerase) (Tyrosinase-related protein 2) (TRP-2) (TRP2)
<b>Background</b>	catalytic activity:L-dopachrome = 5,6-dihydroxyindole-2-carboxylate.,cofactor: Binds 2 zinc ions per subunit.,function:Involved in regulating eumelanin and pheomelanin levels.,pathway:Pigment biosynthesis; melanin





**ELK Biotechnology**

biosynthesis.,similarity:Belongs to the tyrosinase family.,subunit:Tyrosinase, TYRP1 and TYRP2 may form a multienzyme complex.,



Western blot analysis of HELA A549 Cell Lysate, antibody was diluted at 1:1000. Secondary antibody(catalog#:RS0002) was diluted at 1:20000



+86-27-59760950

[ELKbio@ELKbiotech.com](mailto:ELKbio@ELKbiotech.com)

[www.elkbiotech.com](http://www.elkbiotech.com)

23-2, No.388 Gaoxin 2nd Road,Wuhan East Lake Hi-tech Development Zone, Hubei , P.R.C