



WISP-3 rabbit pAb

Cat No.:ES8588

For research use only

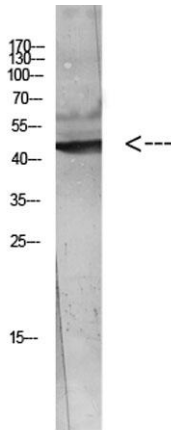
Overview

Product Name	WISP-3 rabbit pAb
Host species	Rabbit
Applications	WB;ELISA
Species Cross-Reactivity	Human;Rat;Mouse;
Recommended dilutions	WB 1:500-2000, ELISA 1:10000-20000
Immunogen	The antiserum was produced against synthesized peptide derived from the N-terminal region of human WISP3. AA range:1-50
Specificity	The antibody detects endogenous WISP-3
Formulation	Liquid in PBS containing 50% glycerol, 0.5% BSA and 0.02% sodium azide.
Storage	Store at -20°C. Avoid repeated freeze-thaw cycles.
Protein Name	WNT1-inducible-signaling pathway protein 3 (WISP-3) (CCN family member 6)
Gene Name	WISP3 CCN6 UNQ462/PRO790/PRO956
Cellular localization	Secreted . Mitochondrion . Associated with membranes. .
Purification	The antibody was affinity-purified from rabbit antiserum by affinity-chromatography using epitope-specific immunogen.
Clonality	Polyclonal
Concentration	1 mg/ml
Observed band	55kD
Human Gene ID	8838
Human Swiss-Prot Number	O95389
Alternative Names	WNT1-inducible-signaling pathway protein 3 (WISP-3) (CCN family member 6)
Background	This gene encodes a member of the WNT1 inducible signaling pathway (WISP) protein subfamily, which belongs to the connective tissue growth factor (CTGF) family. WNT1 is a member of a family of cysteine-rich, glycosylated signaling proteins that mediate diverse developmental processes. The CTGF

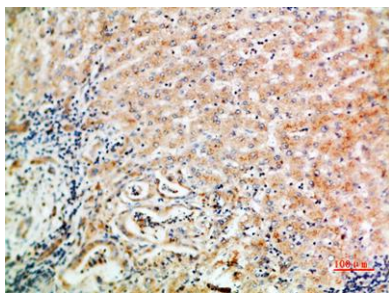




family members are characterized by four conserved cysteine-rich domains: insulin-like growth factor-binding domain, von Willebrand factor type C module, thrombospondin domain and C-terminal cystine knot-like domain. This gene is overexpressed in colon tumors. It may be downstream in the WNT1 signaling pathway that is relevant to malignant transformation. Mutations of this gene are associated with progressive pseudorheumatoid dysplasia, an autosomal recessive skeletal disorder, indicating that the gene is essential for normal postnatal skeletal growth and cartilage homeostasis. Multiple



Western blot analysis of Hela Cell Lysate using antibody. Secondary antibody(catalog#:RS0002) was diluted at 1:20000



Immunohistochemical analysis of paraffin-embedded human-liver-cancer, antibody was diluted at 1:200

