



Tubulin α rabbit pAb

Cat No.:ES8586

For research use only

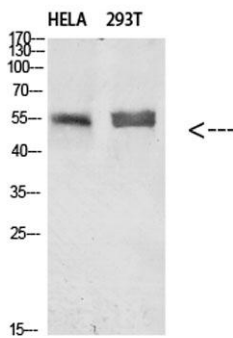
Overview

Product Name	Tubulin α rabbit pAb
Host species	Rabbit
Applications	WB;ELISA
Species Cross-Reactivity	Human;Mouse;Rat
Recommended dilutions	WB 1:500-2000, ELISA 1:10000-20000
Immunogen	Synthetic peptide from human protein at AA range: 380-420
Specificity	The antibody detects endogenous Tubulin α
Formulation	Liquid in PBS containing 50% glycerol, 0.5% BSA and 0.02% sodium azide.
Storage	Store at -20°C. Avoid repeated freeze-thaw cycles.
Protein Name	Tubulin alpha
Gene Name	Tubulin alpha
Cellular localization	Cytoplasm, cytoskeleton.
Purification	The antibody was affinity-purified from rabbit antiserum by affinity-chromatography using epitope-specific immunogen.
Clonality	Polyclonal
Concentration	1 mg/ml
Observed band	15kD
Human Gene ID	7846/10376/84790/113457/112714/7277
Human Swiss-Prot Number	Q71U36/P68363/Q9BQE3/Q13748/P68366/Q9NY65
Alternative Names	Alpha-tubulin 1 antibody ALS22 antibody B ALPHA 1 antibody bA408E5.3 antibody H2 ALPHA antibody Hum a tub1 antibody Hum a tub2 antibody LIS3 antibody MGC171407 antibody MGC55332 antibody TBA4A_HUMAN antibody Testis-specific alpha-tubulin antibody TUBA1 an
Background	Microtubules of the eukaryotic cytoskeleton perform essential and diverse functions and are composed of a heterodimer of alpha and beta tubulins. The genes encoding these microtubule constituents belong to the tubulin superfamily,





which is composed of six distinct families. Genes from the alpha, beta and gamma tubulin families are found in all eukaryotes. The alpha and beta tubulins represent the major components of microtubules, while gamma tubulin plays a critical role in the nucleation of microtubule assembly. There are multiple alpha and beta tubulin genes, which are highly conserved among species. This gene encodes alpha tubulin and is highly similar to the mouse and rat Tuba1 genes. Northern blotting studies have shown that the gene expression is predominantly found in morphologically differentiated neurologic cells. This gene is one of three alpha-tubulin genes in a cluster on chromosome 12q.



Western blot analysis of HELA 293T Cell Lysate using antibody. Secondary antibody(catalog#:RS0002) was diluted at 1:20000

