



RSK3 rabbit pAb

Cat No.:ES8557

For research use only

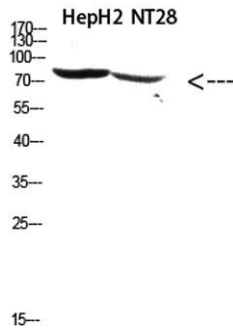
Overview

Product Name	RSK3 rabbit pAb
Host species	Rabbit
Applications	WB;IHC;IF;ELISA
Species Cross-Reactivity	Human;Mouse
Recommended dilutions	Western Blot: 1/500 - 1/2000. Immunohistochemistry: 1/100 - 1/300. ELISA: 1/5000. Not yet tested in other applications.
Immunogen	Synthetic peptide from human protein at AA range: 330-400
Specificity	The antibody detects endogenous RSK3 protein
Formulation	Liquid in PBS containing 50% glycerol, 0.5% BSA and 0.02% sodium azide.
Storage	Store at -20°C. Avoid repeated freeze-thaw cycles.
Protein Name	ribosomal protein S6 kinase, 90kDa, polypeptide 2; hypothetical LOC100127984
Gene Name	RPS6KA2 MAPKAPK1C RSK3
Cellular localization	Nucleus . Cytoplasm .
Purification	The antibody was affinity-purified from rabbit antiserum by affinity-chromatography using epitope-specific immunogen.
Clonality	Polyclonal
Concentration	1 mg/ml
Observed band	80kD
Human Gene ID	6196
Human Swiss-Prot Number	Q15349
Alternative Names	RPS6KA2 MAPKAPK1C RSK3
Background	ribosomal protein S6 kinase A2(RPS6KA2) Homo sapiens This gene encodes a member of the RSK (ribosomal S6 kinase) family of serine/threonine kinases. This kinase contains two non-identical kinase catalytic domains and phosphorylates various substrates, including members of the mitogen-activated kinase (MAPK) signalling

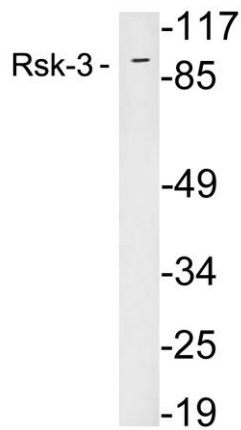




pathway. The activity of this protein has been implicated in controlling cell growth and differentiation. Alternative splice variants, encoding different isoforms, have been characterized. [provided by RefSeq, Jan 2016],



Western Blot analysis of hepg2, NT28 cells using Antibody diluted at 500. Secondary antibody(catalog#:RS0002) was diluted at 1:20000



Western blot analysis of lysates from 293 cells, using Rsk-3 antibody.

