



TRPV4 rabbit pAb

Cat No.:ES8551

For research use only

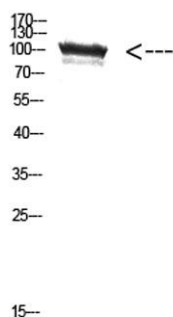
Overview

Product Name	TRPV4 rabbit pAb
Host species	Rabbit
Applications	WB;ELISA
Species Cross-Reactivity	Human;Mouse;Rat
Recommended dilutions	WB 1:500-2000, ELISA 1:10000-20000
Immunogen	The antiserum was produced against synthesized peptide derived from the Internal region of human TRPV4. AA range:461-510
Specificity	The antibody detects endogenous TRPV4 protein
Formulation	Liquid in PBS containing 50% glycerol, 0.5% BSA and 0.02% sodium azide.
Storage	Store at -20°C. Avoid repeated freeze-thaw cycles.
Protein Name	transient receptor potential cation channel, subfamily V, member 4
Gene Name	TRPV4 VRL2 VROAC
Cellular localization	Cell membrane . Apical cell membrane ; Multi-pass membrane protein . Cell junction, adherens junction . Cell projection, cilium . Assembly of the putative homotetramer occurs primarily in the endoplasmic reticulum. . ; [Isoform 1]: Cell membrane . ; [Isofor
Purification	The antibody was affinity-purified from rabbit antiserum by affinity-chromatography using epitope-specific immunogen.
Clonality	Polyclonal
Concentration	1 mg/ml
Observed band	100kD
Human Gene ID	59341
Human Swiss-Prot Number	Q9HBA0
Alternative Names	TRPV4 VRL2 VROAC
Background	transient receptor potential cation channel subfamily V member 4(TRPV4) Homo sapiens This gene encodes a member of the OSM9-like





transient receptor potential channel (OTRPC) subfamily in the transient receptor potential (TRP) superfamily of ion channels. The encoded protein is a Ca²⁺-permeable, nonselective cation channel that is thought to be involved in the regulation of systemic osmotic pressure. Mutations in this gene are the cause of spondylometaphyseal and metatropic dysplasia and hereditary motor and sensory neuropathy type IIC. Multiple transcript variants encoding different isoforms have been found for this gene. [provided by RefSeq, Apr 2010],



Western Blot analysis of HEPG2 cells using Antibody diluted at 500. Secondary antibody(catalog#:RS0002) was diluted at 1:20000

