



FAM48A rabbit pAb

Cat No.:ES8546

For research use only

Overview

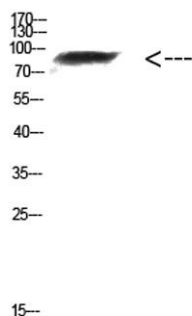
Product Name	FAM48A rabbit pAb
Host species	Rabbit
Applications	WB;ELISA
Species Cross-Reactivity	Human;Mouse;Rat
Recommended dilutions	WB 1:500-2000, ELISA 1:10000-20000
Immunogen	The antiserum was produced against synthesized peptide derived from the Internal region of human FAM48A. AA range:231-280
Specificity	The antibody detects endogenous FAM48A protein
Formulation	Liquid in PBS containing 50% glycerol, 0.5% BSA and 0.02% sodium azide.
Storage	Store at -20°C. Avoid repeated freeze-thaw cycles.
Protein Name	family with sequence similarity 48, member A
Gene Name	FAM48A C13orf19 FP757
Cellular localization	Nucleus .
Purification	The antibody was affinity-purified from rabbit antiserum by affinity-chromatography using epitope-specific immunogen.
Clonality	Polyclonal
Concentration	1 mg/ml
Observed band	85kD
Human Gene ID	55578
Human Swiss-Prot Number	Q8NEM7
Alternative Names	FAM48A C13orf19 FP757
Background	function:Required for MAP kinase p38 (MAPK11, MAPK12, MAPK13 and/or MAPK14) activation during gastrulation. Required for down-regulation of E-cadherin during gastrulation by regulating E-cadherin protein level downstream from NCK-interacting kinase (NIK) and independently of the regulation of transcription by Fgf signaling and Snail.,similarity:Belongs to the FAM48 family.,subunit:Interacts with MAPK14.,tissue





ELK Biotechnology

specificity: Highly expressed in testis, moderately in brain and pituitary gland. Expressed in several fetal tissues, including lung, brain, thymus and kidney. Expression is down-regulated in malignant prostate tissues.,



Western Blot analysis of mouse-kidney cells using Antibody diluted at 1000. Secondary antibody(catalog#:RS0002) was diluted at 1:20000



+86-27-59760950

ELKbio@ELKbiotech.com

www.elkbiotech.com

23-2, No.388 Gaoxin 2nd Road,Wuhan East Lake Hi-tech Development Zone, Hubei , P.R.C