



# Ini1 rabbit pAb

Cat No.:ES8530

For research use only

## Overview

<b>Product Name</b>	Ini1 rabbit pAb
<b>Host species</b>	Rabbit
<b>Applications</b>	WB;ELISA
<b>Species Cross-Reactivity</b>	Human;Mouse;Rat
<b>Recommended dilutions</b>	WB 1:500-2000, ELISA 1:10000-20000
<b>Immunogen</b>	Synthetic peptide from human protein at AA range: 331-380
<b>Specificity</b>	The antibody detects endogenous Ini1 protein
<b>Formulation</b>	Liquid in PBS containing 50% glycerol, 0.5% BSA and 0.02% sodium azide.
<b>Storage</b>	Store at -20°C. Avoid repeated freeze-thaw cycles.
<b>Protein Name</b>	SWI/SNF related, matrix associated, actin dependent regulator of chromatin, subfamily b, member 1
<b>Gene Name</b>	SMARCB1 BAF47 INI1 SNF5L1
<b>Cellular localization</b>	Nucleus.
<b>Purification</b>	The antibody was affinity-purified from rabbit antiserum by affinity-chromatography using epitope-specific immunogen.
<b>Clonality</b>	Polyclonal
<b>Concentration</b>	1 mg/ml
<b>Observed band</b>	45kD
<b>Human Gene ID</b>	6598
<b>Human Swiss-Prot Number</b>	Q12824
<b>Alternative Names</b>	SMARCB1 BAF47 INI1 SNF5L1
<b>Background</b>	The protein encoded by this gene is part of a complex that relieves repressive chromatin structures, allowing the transcriptional machinery to access its targets more effectively. The encoded nuclear protein may also bind to and enhance the DNA joining activity of HIV-1 integrase. This gene has been found to be a tumor suppressor, and mutations in it have been associated with malignant

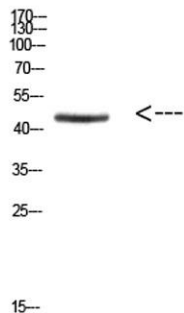




**ELK Biotechnology**

rhabdoid tumors. Alternatively spliced transcript variants have been found for this gene. [provided by RefSeq, Dec 2015],

Western Blot analysis of HEPG2 cells using Antibody diluted at 800. Secondary antibody(catalog#:RS0002) was diluted at 1:20000



+86-27-59760950

ELKbio@ELKbiotech.com

www.elkbiotech.com

23-2, No.388 Gaoxin 2nd Road,Wuhan East Lake Hi-tech Development Zone, Hubei , P.R.C