



# CREB3 rabbit pAb

Cat No.:ES8521

For research use only

## Overview

<b>Product Name</b>	CREB3 rabbit pAb
<b>Host species</b>	Rabbit
<b>Applications</b>	WB;ELISA
<b>Species Cross-Reactivity</b>	Human;Mouse;Rat
<b>Recommended dilutions</b>	WB 1:500-2000, ELISA 1:10000-20000
<b>Immunogen</b>	The antiserum was produced against synthesized peptide derived from the Internal region of human CREB3. AA range:151-200
<b>Specificity</b>	CREB3 Polyclonal Antibody detects endogenous levels of CREB3
<b>Formulation</b>	Liquid in PBS containing 50% glycerol, 0.5% BSA and 0.02% sodium azide.
<b>Storage</b>	Store at -20°C. Avoid repeated freeze-thaw cycles.
<b>Protein Name</b>	CREB3
<b>Gene Name</b>	CREB3
<b>Cellular localization</b>	[Isoform 1]: Endoplasmic reticulum membrane ; Single-pass type II membrane protein . Golgi apparatus . Colocalizes with HCFC1 in neuronal cell bodies of the trigeminal ganglia (PubMed:10623756). Colocalizes with DCSTAMP in the ER membrane of immature dend
<b>Purification</b>	The antibody was affinity-purified from rabbit antiserum by affinity-chromatography using epitope-specific immunogen.
<b>Clonality</b>	Polyclonal
<b>Concentration</b>	1 mg/ml
<b>Observed band</b>	50kD
<b>Human Gene ID</b>	10488
<b>Human Swiss-Prot Number</b>	O43889
<b>Alternative Names</b>	Cyclic AMP-responsive element-binding protein 3 (CREB-3) (cAMP-responsive element-binding protein 3) (Leucin zipper proitein) (Luman) (Transcription factor LZIP-alpha) [Cleaved into: Processed cyclic

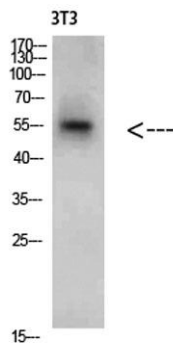




## Background

### AMP-responsive element-binding protein 3 (N-terminal Lu

This gene encodes a transcription factor that is a member of the leucine zipper family of DNA binding proteins. This protein binds to the cAMP-response element and regulates cell proliferation. The protein interacts with host cell factor C1, which also associates with the herpes simplex virus (HSV) protein VP16 that induces transcription of HSV immediate-early genes. This protein and VP16 both bind to the same site on host cell factor C1. It is thought that the interaction between this protein and host cell factor C1 plays a role in the establishment of latency during HSV infection. This protein also plays a role in leukocyte migration, tumor suppression, and endoplasmic reticulum stress-associated protein degradation. Additional transcript variants have been identified, but their biological validity has not been determined.[provided by RefSeq, Nov 2009],



Western Blot analysis of 3T3 cells using CREB3 Polyclonal Antibody diluted at 1:2000. Secondary antibody(catalog#:RS0002) was diluted at 1:20000

