



# NLRX1 rabbit pAb

Cat No.:ES8520

For research use only

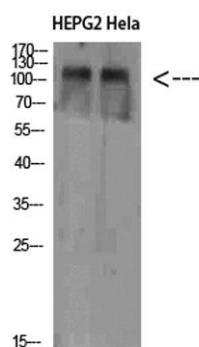
## Overview

<b>Product Name</b>	NLRX1 rabbit pAb
<b>Host species</b>	Rabbit
<b>Applications</b>	WB;IHC;IF;ELISA
<b>Species Cross-Reactivity</b>	Human;Mouse;Rat
<b>Recommended dilutions</b>	WB 1:500-2000, IHC-p 1:50-300, ELISA 1:10000-20000
<b>Immunogen</b>	The antiserum was produced against synthesized peptide derived from the Internal region of human NLRX1. AA range:581-630
<b>Specificity</b>	NLRX1 Polyclonal Antibody detects endogenous levels of NLRX1
<b>Formulation</b>	Liquid in PBS containing 50% glycerol, 0.5% BSA and 0.02% sodium azide.
<b>Storage</b>	Store at -20°C. Avoid repeated freeze-thaw cycles.
<b>Protein Name</b>	NLRX1
<b>Gene Name</b>	NLRX1
<b>Cellular localization</b>	Mitochondrion outer membrane .
<b>Purification</b>	The antibody was affinity-purified from rabbit antiserum by affinity-chromatography using epitope-specific immunogen.
<b>Clonality</b>	Polyclonal
<b>Concentration</b>	1 mg/ml
<b>Observed band</b>	108kD
<b>Human Gene ID</b>	79671
<b>Human Swiss-Prot Number</b>	Q86UT6
<b>Alternative Names</b>	NLR family member X1 (Caterpillar protein 11.3;CLR11.3;Nucleotide-binding oligomerization domain protein 26;Nucleotide-binding oligomerization domain protein 5;Nucleotide-binding oligomerization domain protein 9)
<b>Background</b>	The protein encoded by this gene is a member of the NLR family and localizes to the outer



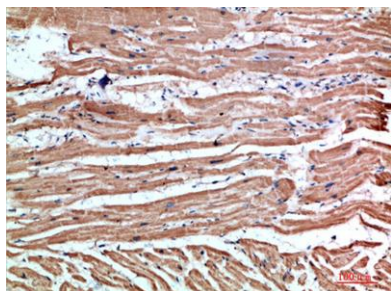


mitochondrial membrane. The encoded protein is a regulator of mitochondrial antiviral responses. Three transcript variants encoding the same protein have been found for this gene. [provided by RefSeq, Aug 2013],

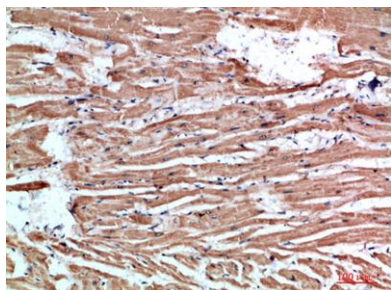


Western Blot analysis of HEPG2 HeLa cells using NLRX1 Polyclonal Antibody diluted at 1:1000. Secondary antibody(catalog#:RS0002) was diluted at 1:20000

Immunohistochemical analysis of paraffin-embedded human-heart, antibody was diluted at 1:200



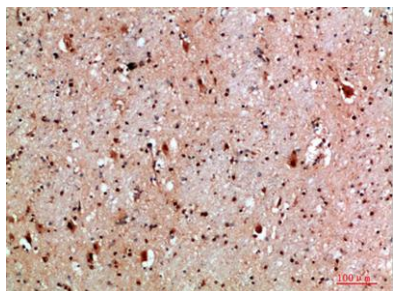
Immunohistochemical analysis of paraffin-embedded human-heart, antibody was diluted at 1:200





**ELK Biotechnology**

Immunohistochemical analysis of paraffin-embedded human-brain, antibody was diluted at 1:200



+86-27-59760950

[ELKbio@ELKbiotech.com](mailto:ELKbio@ELKbiotech.com)

[www.elkbiotech.com](http://www.elkbiotech.com)

23-2, No.388 Gaoxin 2nd Road,Wuhan East Lake Hi-tech Development Zone, Hubei , P.R.C