



Plasminogen receptor rabbit pAb

Cat No.:ES8519

For research use only

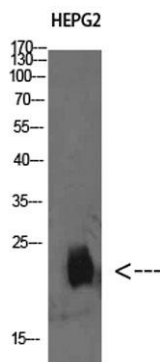
Overview

Product Name	Plasminogen receptor rabbit pAb
Host species	Rabbit
Applications	WB;IHC
Species Cross-Reactivity	Human;Rat
Recommended dilutions	WB 1:500-2000;IHC-p 1:50-300
Immunogen	The antiserum was produced against synthesized peptide derived from the Internal region of human PLGRKT. AA range:1-50
Specificity	Plasminogen receptor Polyclonal Antibody detects endogenous levels of Plasminogen receptor
Formulation	Liquid in PBS containing 50% glycerol, 0.5% BSA and 0.02% sodium azide.
Storage	Store at -20°C. Avoid repeated freeze-thaw cycles.
Protein Name	Plasminogen receptor
Gene Name	PLGRKT
Cellular localization	Cell membrane ; Multi-pass membrane protein . Colocalizes on the cell surface with urokinase plasminogen activator surface receptor/PLAUR. .
Purification	The antibody was affinity-purified from rabbit antiserum by affinity-chromatography using epitope-specific immunogen.
Clonality	Polyclonal
Concentration	1 mg/ml
Observed band	17kD
Human Gene ID	55848
Human Swiss-Prot Number	Q9HBL7
Alternative Names	Plasminogen receptor (KT) (Plg-R(KT))
Background	Plasmin dissolves the fibrin of blood clots and acts as a proteolytic factor in a variety of other processes including embryonic development, tissue remodeling, tumor invasion, and inflammation. In ovulation, weakens the walls of the Graafian follicle. It activates the urokinase-type plasminogen

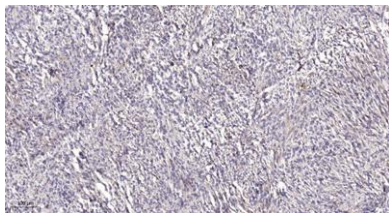




activator, collagenases and several complement zymogens, such as C1 and C5. Cleavage of fibronectin and laminin leads to cell detachment and apoptosis. Also cleaves fibrin, thrombospondin and von Willebrand factor. Its role in tissue remodeling and tumor invasion may be modulated by CSPG4. Binds to cells. Angiostatin is an angiogenesis inhibitor that blocks neovascularization and growth of experimental primary and metastatic tumors in vivo.



Western Blot analysis of HEPG2 cells using Plasminogen receptor Polyclonal Antibody diluted at 1:500. Secondary antibody(catalog#:RS0002) was diluted at 1:20000



Immunohistochemical analysis of paraffin-embedded human Colon cancer. 1, Antibody was diluted at 1:200(4° overnight). 2, Tris-EDTA,pH9.0 was used for antigen retrieval. 3,Secondary antibody was diluted at 1:200(room temperature, 45min).

