



ETBR rabbit pAb

Cat No.:ES8504

For research use only

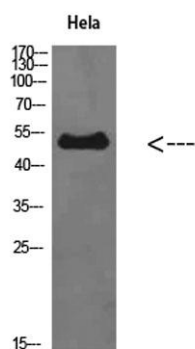
Overview

Product Name	ETBR rabbit pAb
Host species	Rabbit
Applications	WB;IHC;IF;ELISA
Species Cross-Reactivity	Human;Rat;Mouse;
Recommended dilutions	IHC-p: 100-300.WB 1:500-2000, ELISA 1:10000-20000
Immunogen	Synthesized peptide derived from ETBR at AA range: 31-80
Specificity	ETBR Polyclonal Antibody detects endogenous levels of ETBR
Formulation	Liquid in PBS containing 50% glycerol, 0.5% BSA and 0.02% sodium azide.
Storage	Store at -20°C. Avoid repeated freeze-thaw cycles.
Protein Name	ETBR
Gene Name	EDNRB
Cellular localization	Cell membrane ; Multi-pass membrane protein. internalized after activation by endothelins. .
Purification	The antibody was affinity-purified from rabbit antiserum by affinity-chromatography using epitope-specific immunogen.
Clonality	Polyclonal
Concentration	1 mg/ml
Observed band	50kD
Human Gene ID	1910
Human Swiss-Prot Number	P24530
Alternative Names	Endothelin B receptor (ET-B;ET-BR;Endothelin receptor non-selective type)
Background	The protein encoded by this gene is a G protein-coupled receptor which activates a phosphatidylinositol-calcium second messenger system. Its ligand, endothelin, consists of a family of three potent vasoactive peptides: ET1, ET2, and ET3. Studies suggest that the multigenic disorder,



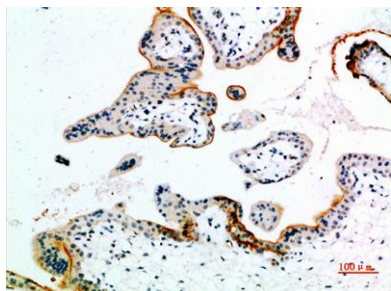


Hirschsprung disease type 2, is due to mutations in the endothelin receptor type B gene. Alternative splicing and the use of alternative promoters results in multiple transcript variants. [provided by RefSeq, Oct 2016],

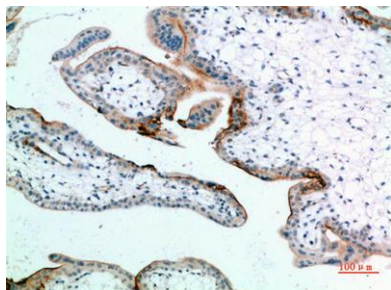


Western Blot analysis of HeLa cells using ETBR Polyclonal Antibody diluted at 1:500. Secondary antibody(catalog#:RS0002) was diluted at 1:20000

Immunohistochemical analysis of paraffin-embedded human-placenta, antibody was diluted at 1:200

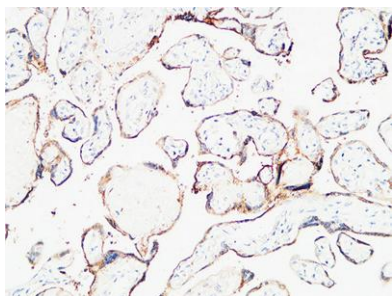


Immunohistochemical analysis of paraffin-embedded human-placenta, antibody was diluted at 1:200





ELK Biotechnology



Immunohistochemical analysis of paraffin-embedded Human placenta. 1, Antibody was diluted at 1:200(4° overnight). 2, High-pressure and temperature EDTA, pH8.0 was used for antigen retrieval. 3,Secondary antibody was diluted at 1:200(room temperature, 30min).



+86-27-59760950

ELKbio@ELKbiotech.com

www.elkbiotech.com

23-2, No.388 Gaoxin 2nd Road,Wuhan East Lake Hi-tech Development Zone, Hubei , P.R.C