



# Tryptase-3 rabbit pAb

Cat No.:ES8494

For research use only

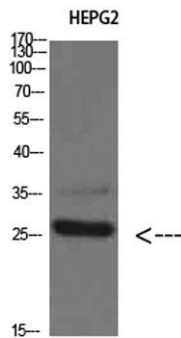
## Overview

<b>Product Name</b>	Tryptase-3 rabbit pAb
<b>Host species</b>	Rabbit
<b>Applications</b>	WB;ELISA
<b>Species Cross-Reactivity</b>	Human;Rat;Mouse;
<b>Recommended dilutions</b>	WB 1:500-2000, ELISA 1:10000-20000
<b>Immunogen</b>	Synthesized peptide derived from Tryptase-3 at AA range: 51-100
<b>Specificity</b>	Tryptase-3 Polyclonal Antibody detects endogenous levels of Tryptase-3
<b>Formulation</b>	Liquid in PBS containing 50% glycerol, 0.5% BSA and 0.02% sodium azide.
<b>Storage</b>	Store at -20°C. Avoid repeated freeze-thaw cycles.
<b>Protein Name</b>	Tryptase-3
<b>Gene Name</b>	TPSD1
<b>Cellular localization</b>	Secreted . Released from the secretory granules upon mast cell activation. .
<b>Purification</b>	The antibody was affinity-purified from rabbit antiserum by affinity-chromatography using epitope-specific immunogen.
<b>Clonality</b>	Polyclonal
<b>Concentration</b>	1 mg/ml
<b>Observed band</b>	26kD
<b>Human Gene ID</b>	23430
<b>Human Swiss-Prot Number</b>	Q9BZJ3
<b>Alternative Names</b>	Tryptase delta (EC 3.4.21.59) (Delta-tryptase) (HmMCP-3-like tryptase III) (Mast cell mMCP-7-like) (Tryptase-3)
<b>Background</b>	tryptase delta 1(TPSD1) Homo sapiens Tryptases comprise a family of trypsin-like serine proteases, the peptidase family S1. Tryptases are enzymatically active only as heparin-stabilized tetramers, and they are resistant to all known endogenous proteinase inhibitors. Several tryptase genes are clustered on



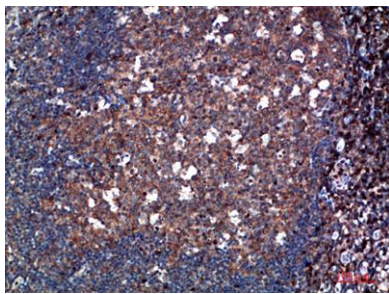


chromosome 16p13.3. These genes are characterized by several distinct features. They have a highly conserved 3' UTR and contain tandem repeat sequences at the 5' flank and 3' UTR which are thought to play a role in regulation of the mRNA stability. Although this gene may be an exception, most of the tryptase genes have an intron immediately upstream of the initiator Met codon, which separates the site of transcription initiation from protein coding sequence. This feature is characteristic of tryptases but is unusual in other genes. Tryptases have been implicated as mediators in the pathogenesis of asthma and other allergic and



Western Blot analysis of HEPG2 cells using Tryptase-3 Polyclonal Antibody diluted at 1:800. Secondary antibody(catalog#:RS0002) was diluted at 1:20000

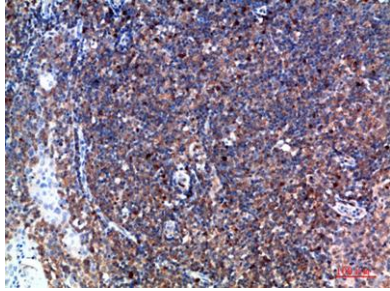
Immunohistochemical analysis of paraffin-embedded human-tonsil, antibody was diluted at 1:200



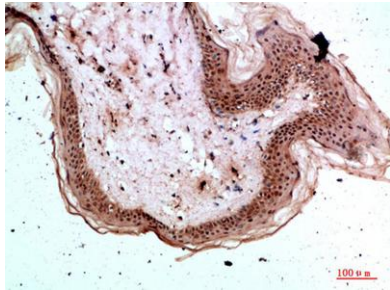


**ELK Biotechnology**

Immunohistochemical analysis of paraffin-embedded human-tonsil, antibody was diluted at 1:200



Immunohistochemical analysis of paraffin-embedded human-skin, antibody was diluted at 1:200



+86-27-59760950

[ELKbio@ELKbiotech.com](mailto:ELKbio@ELKbiotech.com)

[www.elkbiotech.com](http://www.elkbiotech.com)

23-2, No.388 Gaoxin 2nd Road, Wuhan East Lake Hi-tech Development Zone, Hubei, P.R.C