



# Amyloid- $\beta$ rabbit pAb

Cat No.:ES8491

For research use only

## Overview

<b>Product Name</b>	Amyloid- $\beta$ rabbit pAb
<b>Host species</b>	Rabbit
<b>Applications</b>	WB; IF;ELISA
<b>Species Cross-Reactivity</b>	Human;Rat;Mouse;
<b>Recommended dilutions</b>	WB 1:500-2000; IF/ICC 1:100-500;ELISA 1:5000-20000
<b>Immunogen</b>	Synthesized peptide derived from Amyloid- $\beta$ at AA range: 631-680
<b>Specificity</b>	Amyloid- $\beta$ Polyclonal Antibody detects endogenous levels of Amyloid- $\beta$
<b>Formulation</b>	Liquid in PBS containing 50% glycerol, 0.5% BSA and 0.02% sodium azide.
<b>Storage</b>	Store at -20°C. Avoid repeated freeze-thaw cycles.
<b>Protein Name</b>	Amyloid beta A4 protein, Amyloid- $\beta$ , A $\beta$
<b>Gene Name</b>	APP
<b>Cellular localization</b>	Cell membrane ; Single-pass type I membrane protein . Membrane ; Single-pass type I membrane protein . Perikaryon . Cell projection, growth cone . Membrane, clathrin-coated pit . Early endosome . Cytoplasmic vesicle . Cell surface protein that rapidly bec
<b>Purification</b>	The antibody was affinity-purified from rabbit antiserum by affinity-chromatography using epitope-specific immunogen.
<b>Clonality</b>	Polyclonal
<b>Concentration</b>	1 mg/ml
<b>Observed band</b>	86+45kD
<b>Human Gene ID</b>	351
<b>Human Swiss-Prot Number</b>	P05067
<b>Alternative Names</b>	Amyloid beta A4 protein (ABPP) (APPI) (APP) (Alzheimer disease amyloid protein) (Cerebral vascular amyloid peptide) (CVAP) (PreA4) (Protease nexin-II) (PN-II) [Cleaved into: N-APP; Soluble

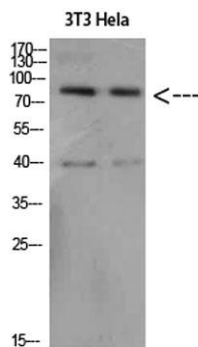




## Background

APP-alpha (S-APP-alpha); Soluble APP-beta (S-APP-beta); C99; Beta-

This gene encodes a cell surface receptor and transmembrane precursor protein that is cleaved by secretases to form a number of peptides. Some of these peptides are secreted and can bind to the acetyltransferase complex APBB1/TIP60 to promote transcriptional activation, while others form the protein basis of the amyloid plaques found in the brains of patients with Alzheimer disease. In addition, two of the peptides are antimicrobial peptides, having been shown to have bacteriocidal and antifungal activities. Mutations in this gene have been implicated in autosomal dominant Alzheimer disease and cerebroarterial amyloidosis (cerebral amyloid angiopathy). Multiple transcript variants encoding several different isoforms have been found for this gene. [provided by RefSeq, Aug 2014],



Western Blot analysis of 3T3 HeLa cells using Amyloid- $\beta$  Polyclonal Antibody diluted at 1:500. Secondary antibody(catalog#:RS0002) was diluted at 1:20000

