



WIPI1 rabbit pAb

Cat No.:ES8479

For research use only

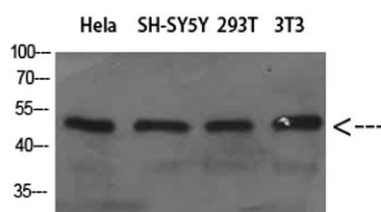
Overview

Product Name	WIPI1 rabbit pAb
Host species	Rabbit
Applications	WB;ELISA
Species Cross-Reactivity	Human(mouse94%)
Recommended dilutions	WB 1:500-2000, ELISA 1:10000-20000
Immunogen	Synthetic Peptide of WIPI1
Specificity	WIPI1 Polyclonal Antibody detects endogenous levels of WIPI1
Formulation	Liquid in PBS containing 50% glycerol, 0.5% BSA and 0.02% sodium azide.
Storage	Store at -20°C. Avoid repeated freeze-thaw cycles.
Protein Name	WIPI1
Gene Name	WIPI1 WIPI49
Cellular localization	Golgi apparatus, trans-Golgi network. Endosome. Cytoplasmic vesicle, clathrin-coated vesicle. Preautophagosomal structure membrane ; Peripheral membrane protein. Cytoplasm, cytoskeleton. Trans elements of the Golgi and peripheral endosomes. Dynamically cy
Purification	The antibody was affinity-purified from rabbit antiserum by affinity-chromatography using epitope-specific immunogen.
Clonality	Polyclonal
Concentration	1 mg/ml
Observed band	48kD
Human Gene ID	55062
Human Swiss-Prot Number	Q5MNZ9
Alternative Names	WD repeat domain, phosphoinositide interacting 1
Background	WD repeat domain, phosphoinositide interacting 1(WIPI1) Homo sapiens This gene encodes a WD40 repeat protein. Members of the WD40 repeat family are key components of many essential biologic functions. They regulate the assembly of





multiprotein complexes by presenting a beta-propeller platform for simultaneous and reversible protein-protein interactions. Members of the WIPI subfamily of WD40 repeat proteins have a 7-bladed propeller structure and contain a conserved motif for interaction with phospholipids. Alternative splicing results in multiple transcript variants. [provided by RefSeq, Mar 2016],



Western Blot analysis of HeLa SH-SY5Y 293T 3T3 cells using WIFI1 Polyclonal Antibody diluted at 1:800. Secondary antibody(catalog#:RS0002) was diluted at 1:20000

