



# E-Selectin rabbit pAb

Cat No.:ES8463

For research use only

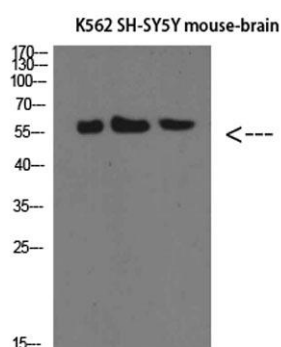
## Overview

<b>Product Name</b>	E-Selectin rabbit pAb
<b>Host species</b>	Rabbit
<b>Applications</b>	WB;IHC;IF;ELISA
<b>Species Cross-Reactivity</b>	Human;Rat;Mouse;
<b>Recommended dilutions</b>	IHC-p: 100-300.WB 1:500-2000, ELISA 1:10000-20000
<b>Immunogen</b>	The antiserum was produced against synthesized peptide derived from the N-terminal region of human SELE. AA range:100-150
<b>Specificity</b>	E-Selectin Polyclonal Antibody detects endogenous levels of E-Selectin
<b>Formulation</b>	Liquid in PBS containing 50% glycerol, 0.5% BSA and 0.02% sodium azide.
<b>Storage</b>	Store at -20°C. Avoid repeated freeze-thaw cycles.
<b>Protein Name</b>	E-Selectin
<b>Gene Name</b>	SELE ELAM1
<b>Cellular localization</b>	Cell membrane ; Single-pass type I membrane protein.
<b>Purification</b>	The antibody was affinity-purified from rabbit antiserum by affinity-chromatography using epitope-specific immunogen.
<b>Clonality</b>	Polyclonal
<b>Concentration</b>	1 mg/ml
<b>Observed band</b>	66kD
<b>Human Gene ID</b>	6401
<b>Human Swiss-Prot Number</b>	P16581
<b>Alternative Names</b>	selectin E
<b>Background</b>	The protein encoded by this gene is found in cytokine-stimulated endothelial cells and is thought to be responsible for the accumulation of blood leukocytes at sites of inflammation by mediating the adhesion of cells to the vascular lining. It exhibits structural features such as the presence of lectin-



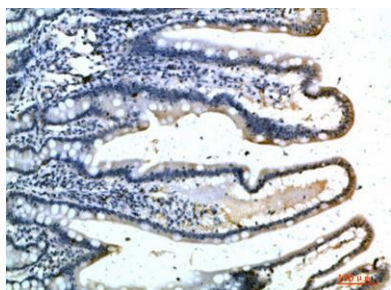


and EGF-like domains followed by short consensus repeat (SCR) domains that contain 6 conserved cysteine residues. These proteins are part of the selectin family of cell adhesion molecules. Adhesion molecules participate in the interaction between leukocytes and the endothelium and appear to be involved in the pathogenesis of atherosclerosis. [provided by RefSeq, Jul 2008],

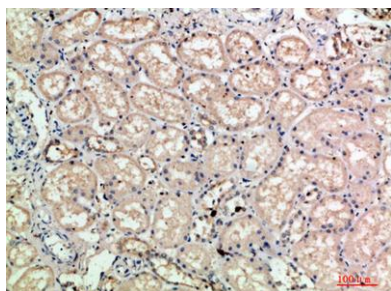


Western Blot analysis of K562 SH-SY5Y mouse-brain cells using E-Selectin Polyclonal Antibody diluted at 1:500. Secondary antibody(catalog#:RS0002) was diluted at 1:20000

Immunohistochemical analysis of paraffin-embedded human-colon, antibody was diluted at 1:200

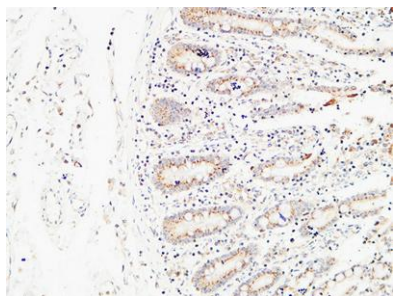


Immunohistochemical analysis of paraffin-embedded human-kidney, antibody was diluted at 1:200





**ELK Biotechnology**



Immunohistochemical analysis of paraffin-embedded Human colon. 1, Antibody was diluted at 1:200(4° overnight). 2, High-pressure and temperature EDTA, pH8.0 was used for antigen retrieval. 3,Secondary antibody was diluted at 1:200(room temperature, 30min).



+86-27-59760950

[ELKbio@ELKbiotech.com](mailto:ELKbio@ELKbiotech.com)

[www.elkbiotech.com](http://www.elkbiotech.com)

23-2, No.388 Gaoxin 2nd Road,Wuhan East Lake Hi-tech Development Zone, Hubei , P.R.C