



MER/TYRO3 (Phospho-Tyr753/Tyr685) rabbit pAb

Cat No.:ES8458

For research use only

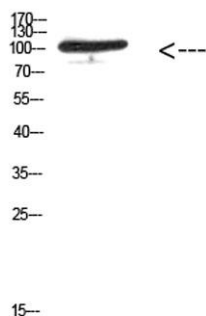
Overview

Product Name	MER/TYRO3 (Phospho-Tyr753/Tyr685) rabbit pAb
Host species	Rabbit
Applications	WB;ELISA;IHC
Species Cross-Reactivity	Human:Y753/Y685;Mouse:Y748/Y675;Rat:Y748/Y675
Recommended dilutions	WB 1:500-2000;IHC-p 1:50-300; ELISA 2000-20000
Immunogen	Synthesized phospho-peptide around the phosphorylation site of human MER/TYRO3 (Phospho-Tyr753/Tyr685)
Specificity	This antibody detects endogenous levels of MER/TYRO3 at Human:Y753/Y685;Mouse:Y748/Y675;Rat:Y748/Y675, It doesn't react with total protein.
Formulation	Liquid in PBS containing 50% glycerol, 0.5% BSA and 0.02% sodium azide.
Storage	Store at -20°C. Avoid repeated freeze-thaw cycles.
Protein Name	c-mer proto-oncogene tyrosine kinase
Gene Name	MERTK MER
Cellular localization	Cell membrane ; Single-pass type I membrane protein .
Purification	The antibody was affinity-purified from rabbit antiserum by affinity-chromatography using epitope-specific immunogen.
Clonality	Polyclonal
Concentration	1 mg/ml
Observed band	110kD
Human Gene ID	10461/7301
Human Swiss-Prot Number	Q12866/Q06418
Alternative Names	MERTK MER
Background	This gene is a member of the MER/AXL/TYRO3 receptor kinase family and encodes a transmembrane protein with two fibronectin type-III domains, two Ig-like C2-type (immunoglobulin-like) domains, and





one tyrosine kinase domain. Mutations in this gene have been associated with disruption of the retinal pigment epithelium (RPE) phagocytosis pathway and onset of autosomal recessive retinitis pigmentosa (RP). [provided by RefSeq, Jul 2008],



Western Blot analysis of 293T cells using Antibody diluted at 500. Secondary antibody(catalog#:RS0002) was diluted at 1:20000

Immunohistochemical analysis of paraffin-embedded human lung cancer. 1, Antibody was diluted at 1:200(4° overnight). 2, Tris-EDTA,pH9.0 was used for antigen retrieval. 3,Secondary antibody was diluted at 1:200(room temperature, 45min).

