



SSTR2 rabbit pAb

Cat No.:ES8442

For research use only

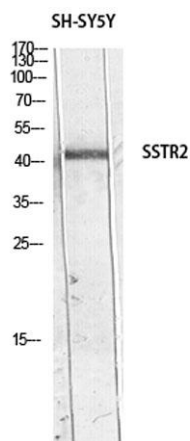
Overview

Product Name	SSTR2 rabbit pAb
Host species	Rabbit
Applications	WB;ELISA
Species Cross-Reactivity	Human;Mouse;Rat
Recommended dilutions	Western Blot: 1/500 - 1/2000. ELISA: 1/10000. Not yet tested in other applications.
Immunogen	The antiserum was produced against synthesized peptide derived from the Internal region of human SSTR2. AA range:220-270
Specificity	SSTR2 Polyclonal Antibody detects endogenous levels of somatostatin receptor 2
Formulation	Liquid in PBS containing 50% glycerol, 0.5% BSA and 0.02% sodium azide.
Storage	Store at -20°C. Avoid repeated freeze-thaw cycles.
Protein Name	somatostatin receptor 2
Gene Name	SSTR2
Cellular localization	Cell membrane; Multi-pass membrane protein. Cytoplasm. Located mainly at the cell surface under basal conditions. Agonist stimulation results in internalization to the cytoplasm.
Purification	The antibody was affinity-purified from rabbit antiserum by affinity-chromatography using epitope-specific immunogen.
Clonality	Polyclonal
Concentration	1 mg/ml
Observed band	40kD
Human Gene ID	6752
Human Swiss-Prot Number	P30874
Alternative Names	Somatostatin receptor type 2 (SS-2-R) (SS2-R) (SS2R) (SRIF-1)
Background	Somatostatin acts at many sites to inhibit the release of many hormones and other secretory proteins. The biologic effects of somatostatin are





probably mediated by a family of G protein-coupled receptors that are expressed in a tissue-specific manner. SSTR2 is a member of the superfamily of receptors having seven transmembrane segments and is expressed in highest levels in cerebrum and kidney. [provided by RefSeq, Jul 2008],



Western blot analysis of SH-SY5Y lysis using SSTR2 antibody. Antibody was diluted at 1:500. Secondary antibody(catalog#:RS0002) was diluted at 1:20000

