



# K-Ras rabbit pAb

Cat No.:ES8441

For research use only

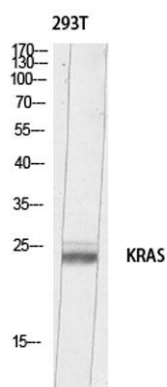
## Overview

<b>Product Name</b>	K-Ras rabbit pAb
<b>Host species</b>	Rabbit
<b>Applications</b>	WB;IHC;IF;ELISA
<b>Species Cross-Reactivity</b>	Human;Mouse;Rat
<b>Recommended dilutions</b>	IHC-p: 100-300.Western Blot: 1/500 - 1/2000. ELISA: 1/10000. Not yet tested in other applications.
<b>Immunogen</b>	The antiserum was produced against synthesized peptide derived from the C-terminal region of human KRAS. AA range:150-189
<b>Specificity</b>	K-Ras Polyclonal Antibody detects endogenous levels of v-Ki-ras2 Kirsten rat sarcoma viral oncogene homolog
<b>Formulation</b>	Liquid in PBS containing 50% glycerol, 0.5% BSA and 0.02% sodium azide.
<b>Storage</b>	Store at -20°C. Avoid repeated freeze-thaw cycles.
<b>Protein Name</b>	v-Ki-ras2 Kirsten rat sarcoma viral oncogene homolog
<b>Gene Name</b>	KRAS
<b>Cellular localization</b>	Cell membrane ; Lipid-anchor ; Cytoplasmic side . Endomembrane system . Cytoplasm, cytosol . ; [Isoform 2B]: Cell membrane ; Lipid-anchor .
<b>Purification</b>	The antibody was affinity-purified from rabbit antiserum by affinity-chromatography using epitope-specific immunogen.
<b>Clonality</b>	Polyclonal
<b>Concentration</b>	1 mg/ml
<b>Observed band</b>	22kD
<b>Human Gene ID</b>	3845
<b>Human Swiss-Prot Number</b>	P01116
<b>Alternative Names</b>	GTPase KRas (K-Ras 2;Ki-Ras;c-K-ras;c-Ki-ras) [Cleaved into: GTPase KRas, N-terminally processed]
<b>Background</b>	This gene, a Kirsten ras oncogene homolog from the mammalian ras gene family, encodes a protein that

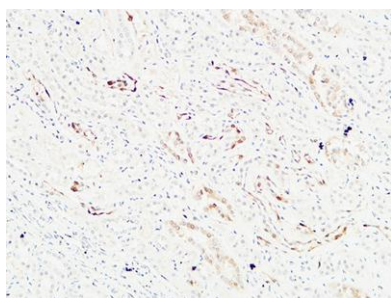




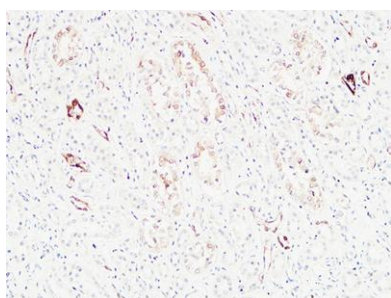
is a member of the small GTPase superfamily. A single amino acid substitution is responsible for an activating mutation. The transforming protein that results is implicated in various malignancies, including lung adenocarcinoma, mucinous adenoma, ductal carcinoma of the pancreas and colorectal carcinoma. Alternative splicing leads to variants encoding two isoforms that differ in the C-terminal region. [provided by RefSeq, Jul 2008],



Western blot analysis of 293T lysis using KRAS antibody. Antibody was diluted at 1:500. Secondary antibody(catalog#:RS0002) was diluted at 1:20000



Immunohistochemical analysis of paraffin-embedded Human kidney. 1, Antibody was diluted at 1:200(4° overnight). 2, High-pressure and temperature EDTA, pH8.0 was used for antigen retrieval. 3,Secondary antibody was diluted at 1:200(room temperature, 30min).

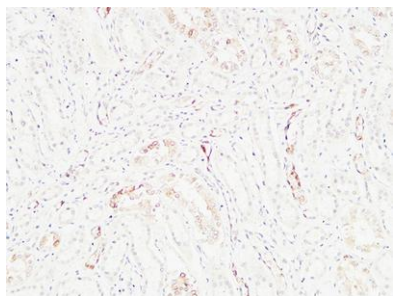


Immunohistochemical analysis of paraffin-embedded Human kidney. 1, Antibody was diluted at 1:200(4° overnight). 2, High-pressure and temperature EDTA, pH8.0 was used for antigen retrieval. 3,Secondary antibody was diluted at 1:200(room temperature, 30min)





**ELK Biotechnology**



Immunohistochemical analysis of paraffin-embedded Human kidney. 1, Antibody was diluted at 1:200(4° overnight). 2, High-pressure and temperature EDTA, pH8.0 was used for antigen retrieval. 3,Secondary antibody was diluted at 1:200(room temperature, 30min).



+86-27-59760950

[ELKbio@ELKbiotech.com](mailto:ELKbio@ELKbiotech.com)

[www.elkbiotech.com](http://www.elkbiotech.com)

23-2, No.388 Gaoxin 2nd Road,Wuhan East Lake Hi-tech Development Zone, Hubei , P.R.C