



CMTM8 rabbit pAb

Cat No.:ES8424

For research use only

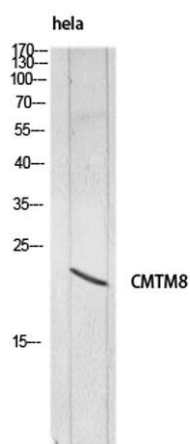
Overview

Product Name	CMTM8 rabbit pAb
Host species	Rabbit
Applications	WB;IHC;IF;ELISA
Species Cross-Reactivity	Human;Rat;Mouse;
Recommended dilutions	Western Blot: 1/500 - 1/2000. IHC-p: 1:100-1:300. ELISA: 1/10000. Not yet tested in other applications.
Immunogen	The antiserum was produced against synthesized peptide derived from the Internal region of human CMTM8. AA range:101-150
Specificity	CMTM8 Polyclonal Antibody detects endogenous levels of CMTM8 protein.
Formulation	Liquid in PBS containing 50% glycerol, 0.5% BSA and 0.02% sodium azide.
Storage	Store at -20°C. Avoid repeated freeze-thaw cycles.
Protein Name	CKLF-like MARVEL transmembrane domain-containing protein 8
Gene Name	CMTM8
Cellular localization	[Isoform 1]: Membrane; Multi-pass membrane protein.; [Isoform 2]: Cytoplasm. Nucleus.
Purification	The antibody was affinity-purified from rabbit antiserum by affinity-chromatography using epitope-specific immunogen.
Clonality	Polyclonal
Concentration	1 mg/ml
Observed band	20kD
Human Gene ID	152189
Human Swiss-Prot Number	Q8IZV2
Alternative Names	CMTM8; CKLFSF8; CKLF-like MARVEL transmembrane domain-containing protein 8; Chemokine-like factor superfamily member 8
Background	This gene belongs to the chemokine-like factor gene superfamily, a novel family that is similar to the chemokine and the transmembrane 4 superfamilies.



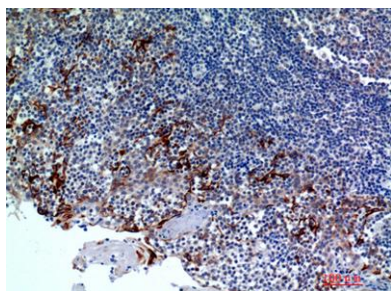


This gene is one of several chemokine-like factor genes located in a cluster on chromosome 3. This gene acts as a tumor suppressor, and plays a role in regulating the migration of tumor cells. The encoded protein is thought to function as a negative regulator of epidermal growth factor-induced signaling. Alternative splicing results in multiple transcript variants encoding different isoforms. [provided by RefSeq, Feb 2016],

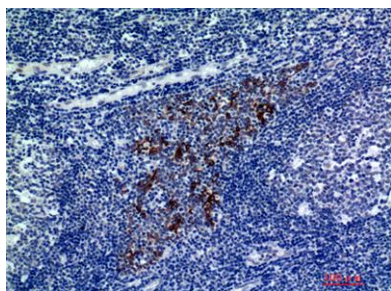


Western blot analysis of HeLa lysis using CMTM8 antibody. Secondary antibody (catalog#:RS0002) was diluted at 1:20000

Immunohistochemical analysis of paraffin-embedded human tonsils, antibody was diluted at 1:200



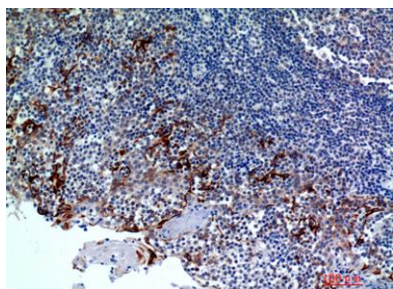
Immunohistochemical analysis of paraffin-embedded human tonsils, antibody was diluted at 1:200





ELK Biotechnology

Immunohistochemical analysis of paraffin-embedded human-tonsils2, antibody was diluted at 1:100



+86-27-59760950

ELKbio@ELKbiotech.com

www.elkbiotech.com

23-2, No.388 Gaoxin 2nd Road,Wuhan East Lake Hi-tech Development Zone, Hubei , P.R.C