



CD56 rabbit pAb

Cat No.:ES8423

For research use only

Overview

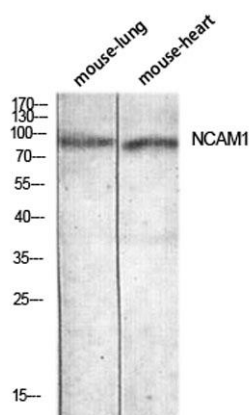
Product Name	CD56 rabbit pAb
Host species	Rabbit
Applications	WB;IHC;IF;ELISA
Species Cross-Reactivity	Human;Rat;Mouse;
Recommended dilutions	Western Blot: 1/500 - 1/2000. IHC-p: 1:100-1:300. ELISA: 1/10000. Not yet tested in other applications.
Immunogen	The antiserum was produced against synthesized peptide derived from the Internal region of human NCAM1. AA range:250-300
Specificity	CD56 Polyclonal Antibody detects endogenous levels of CD56 protein.
Formulation	Liquid in PBS containing 50% glycerol, 0.5% BSA and 0.02% sodium azide.
Storage	Store at -20°C. Avoid repeated freeze-thaw cycles.
Protein Name	Neural cell adhesion molecule 1
Gene Name	NCAM1
Cellular localization	[Isoform 1]: Cell membrane; Single-pass type I membrane protein.; [Isoform 2]: Cell membrane; Single-pass type I membrane protein.; [Isoform 3]: Cell membrane; Lipid-anchor, GPI-anchor.; [Isoform 4]: Cell membrane ; Lipid-anchor, GPI-anchor .; [Isoform 5]: Secreted.; [Isoform 6]: Secreted .
Purification	The antibody was affinity-purified from rabbit antiserum by affinity-chromatography using epitope-specific immunogen.
Clonality	Polyclonal
Concentration	1 mg/ml
Observed band	94kD
Human Gene ID	4684
Human Swiss-Prot Number	P13591
Alternative Names	NCAM1; NCAM; Neural cell adhesion molecule 1; N-CAM-1; NCAM-1; CD56
Background	This gene encodes a cell adhesion protein which is a



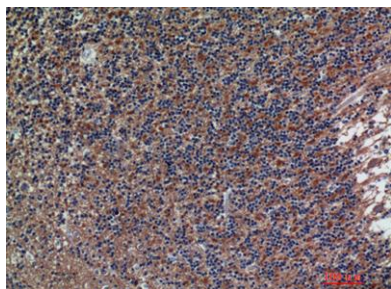


member of the immunoglobulin superfamily. The encoded protein is involved in cell-to-cell interactions as well as cell-matrix interactions during development and differentiation. The encoded protein has been shown to be involved in development of the nervous system, and for cells involved in the expansion of T cells and dendritic cells which play an important role in immune surveillance. Alternative splicing results in multiple transcript variants. [provided by RefSeq, Jun 2011],

Western blot analysis of mouse-lung mouse-heart lysis using NCAM1 antibody. Antibody was diluted at 1:1000. Secondary antibody(catalog#:RS0002) was diluted at 1:20000



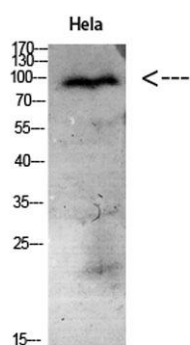
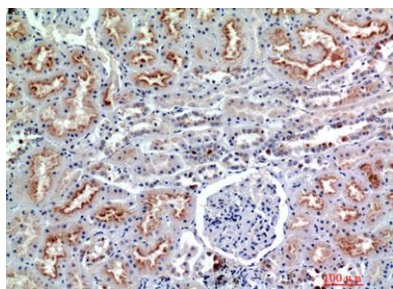
Immunohistochemical analysis of paraffin-embedded human-brain, antibody was diluted at 1:200





ELK Biotechnology

Immunohistochemical analysis of paraffin-embedded human-kidney, antibody was diluted at 1:200



Western Blot analysis of HeLa cells using Antibody diluted at 1:1000. Secondary antibody(catalog#:RS0002) was diluted at 1:20000



+86-27-59760950

ELKbio@ELKbiotech.com

www.elkbiotech.com

23-2, No.388 Gaoxin 2nd Road,Wuhan East Lake Hi-tech Development Zone, Hubei , P.R.C