



C7 rabbit pAb

Cat No.:ES8422

For research use only

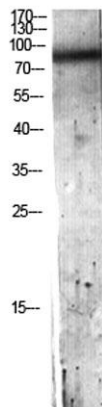
Overview

Product Name	C7 rabbit pAb
Host species	Rabbit
Applications	WB;IHC;IF;ELISA
Species Cross-Reactivity	Human;Rat;Mouse;
Recommended dilutions	Western Blot: 1/500 - 1/2000. IHC-p: 1:100-1:300. ELISA: 1/10000. Not yet tested in other applications.
Immunogen	The antiserum was produced against synthesized peptide derived from the N-terminal region of human C7. AA range:100-150
Specificity	C7 Polyclonal Antibody detects endogenous levels of C7 protein.
Formulation	Liquid in PBS containing 50% glycerol, 0.5% BSA and 0.02% sodium azide.
Storage	Store at -20°C. Avoid repeated freeze-thaw cycles.
Protein Name	Complement component C7
Gene Name	C7
Cellular localization	Secreted.
Purification	The antibody was affinity-purified from rabbit antiserum by affinity-chromatography using epitope-specific immunogen.
Clonality	Polyclonal
Concentration	1 mg/ml
Observed band	93kD
Human Gene ID	730
Human Swiss-Prot Number	P10643
Alternative Names	C7; Complement component C7
Background	C7 is a component of the complement system. It participates in the formation of Membrane Attack Complex (MAC). People with C7 deficiency are prone to bacterial infection. [provided by RefSeq, Jul 2008],

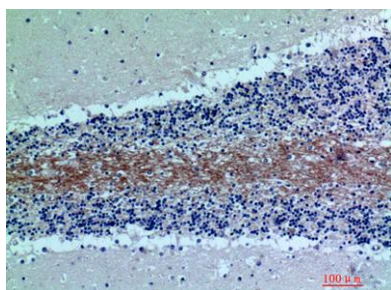




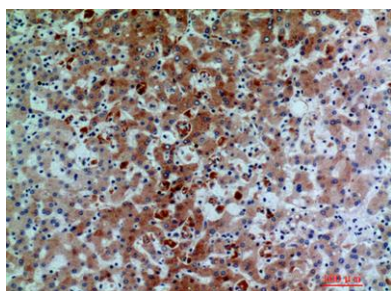
ELK Biotechnology



Western blot analysis of HeLa lysis using C7 antibody.
Antibody was diluted at 1:500. Secondary
antibody(catalog#:RS0002) was diluted at 1:20000



Immunohistochemical analysis of paraffin-embedded
human-brain, antibody was diluted at 1:200



Immunohistochemical analysis of paraffin-embedded
human-liver, antibody was diluted at 1:200



+86-27-59760950

ELKbio@ELKbiotech.com

www.elkbiotech.com

23-2, No.388 Gaoxin 2nd Road,Wuhan East Lake Hi-tech Development Zone, Hubei , P.R.C