



# ASAH3L rabbit pAb

Cat No.:ES8419

For research use only

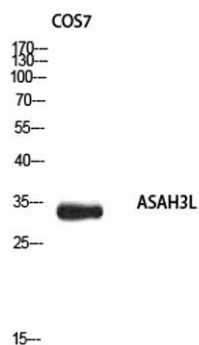
## Overview

<b>Product Name</b>	ASAH3L rabbit pAb
<b>Host species</b>	Rabbit
<b>Applications</b>	WB;IHC;IF;ELISA
<b>Species Cross-Reactivity</b>	Human;Mouse;Monkey
<b>Recommended dilutions</b>	Western Blot: 1/500 - 1/2000. IHC-p: 1:100-1:300. ELISA: 1/10000. Not yet tested in other applications.
<b>Immunogen</b>	Synthesized peptide derived from ASAH3L . at AA range: 50-130
<b>Specificity</b>	ASAH3L Polyclonal Antibody detects endogenous levels of ASAH3L protein.
<b>Formulation</b>	Liquid in PBS containing 50% glycerol, 0.5% BSA and 0.02% sodium azide.
<b>Storage</b>	Store at -20°C. Avoid repeated freeze-thaw cycles.
<b>Protein Name</b>	Alkaline ceramidase 2
<b>Gene Name</b>	ACER2
<b>Cellular localization</b>	Golgi apparatus membrane ; Multi-pass membrane protein .
<b>Purification</b>	The antibody was affinity-purified from rabbit antiserum by affinity-chromatography using epitope-specific immunogen.
<b>Clonality</b>	Polyclonal
<b>Concentration</b>	1 mg/ml
<b>Observed band</b>	33kD
<b>Human Gene ID</b>	340485
<b>Human Swiss-Prot Number</b>	Q5QJU3
<b>Alternative Names</b>	ACER2; ASAH3L; PP11646; Alkaline ceramidase 2; AlkCDase 2; Alkaline CDase 2; haCER2; Acylsphingosine deacylase 3-like; N-acylsphingosine amidohydrolase 3-like
<b>Background</b>	The sphingolipid metabolite sphingosine-1-phosphate promotes cell proliferation and survival, whereas its precursor, sphingosine, has the opposite effect. The ceramidase ACER2



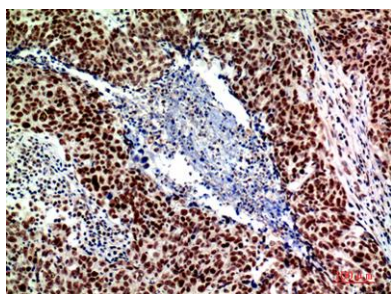


hydrolyzes very long chain ceramides to generate sphingosine (Xu et al., 2006 [PubMed 16940153]).[supplied by OMIM, Jul 2010],

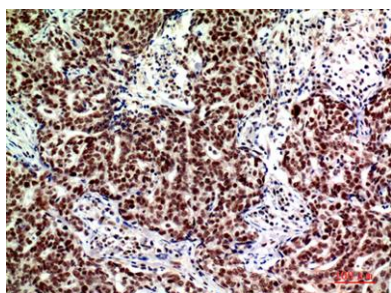


Western blot analysis of COS7 using ASA3L antibody. Secondary antibody(catalog#:RS0002) was diluted at 1:20000

Immunohistochemical analysis of paraffin-embedded human-breast-cancer, antibody was diluted at 1:200



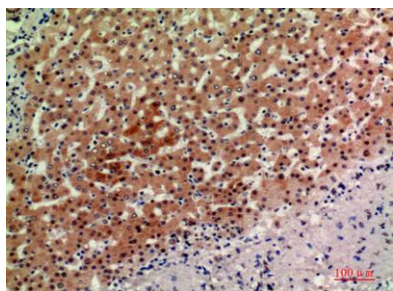
Immunohistochemical analysis of paraffin-embedded human-breast-cancer, antibody was diluted at 1:200





**ELK Biotechnology**

Immunohistochemical analysis of paraffin-embedded human-liver, antibody was diluted at 1:200



+86-27-59760950

[ELKbio@ELKbiotech.com](mailto:ELKbio@ELKbiotech.com)

[www.elkbiotech.com](http://www.elkbiotech.com)

23-2, No.388 Gaoxin 2nd Road,Wuhan East Lake Hi-tech Development Zone, Hubei , P.R.C