



CD235a rabbit pAb

Cat No.:ES8412

For research use only

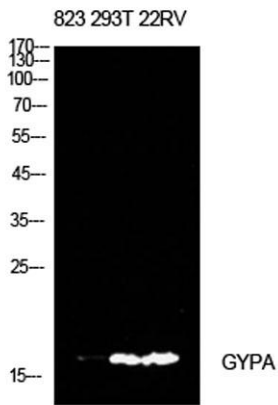
Overview

Product Name	CD235a rabbit pAb
Host species	Rabbit
Applications	WB;IHC;IF;ELISA
Species Cross-Reactivity	Human;Rat;Mouse;
Recommended dilutions	Western Blot: 1/500 - 1/2000. IHC-p: 1:100-1:300. ELISA: 1/10000. Not yet tested in other applications.
Immunogen	The antiserum was produced against synthesized peptide derived from the Internal region of human GYPA. AA range:41-90
Specificity	CD235a Polyclonal Antibody detects endogenous levels of CD235a protein.
Formulation	Liquid in PBS containing 50% glycerol, 0.5% BSA and 0.02% sodium azide.
Storage	Store at -20°C. Avoid repeated freeze-thaw cycles.
Protein Name	Glycophorin-A
Gene Name	GYPA
Cellular localization	Cell membrane ; Single-pass type I membrane protein . Appears to be colocalized with SLC4A1.
Purification	The antibody was affinity-purified from rabbit antiserum by affinity-chromatography using epitope-specific immunogen.
Clonality	Polyclonal
Concentration	1 mg/ml
Observed band	16kD
Human Gene ID	2993
Human Swiss-Prot Number	P02724
Alternative Names	GYPA; GPA; Glycophorin-A; MN sialoglycoprotein; PAS-2; Sialoglycoprotein alpha; CD235a
Background	Glycophorins A (GYPA) and B (GYPB) are major sialoglycoproteins of the human erythrocyte membrane which bear the antigenic determinants for the MN and Ss blood groups. In addition to the M or N and S or s antigens that commonly occur in

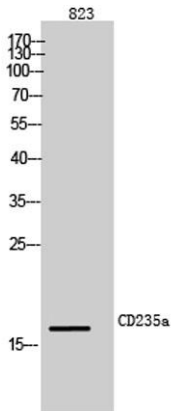




all populations, about 40 related variant phenotypes have been identified. These variants include all the variants of the Miltenberger complex and several isoforms of Sta, as well as Dantu, Sat, He, Mg, and deletion variants Ena, S-s-U- and Mk. Most of the variants are the result of gene recombinations between GYPA and GYPB. [provided by RefSeq, Jul 2008],

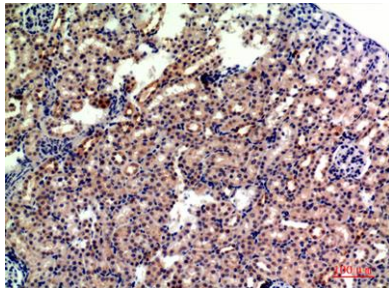


Western Blot analysis of 823, 293T, 22RV cells using CD235a Polyclonal Antibody. Antibody was diluted at 1:500. Secondary antibody(catalog#:RS0002) was diluted at 1:20000



Western Blot analysis of 823 cells using CD235a Polyclonal Antibody diluted at 1:500. Secondary antibody(catalog#:RS0002) was diluted at 1:20000

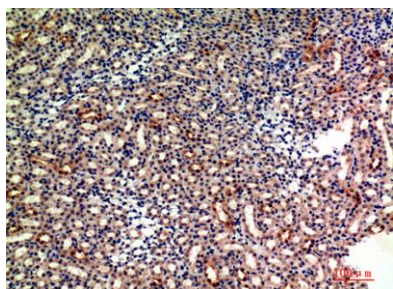
Immunohistochemical analysis of paraffin-embedded mouse-kidney, antibody was diluted at 1:200





ELK Biotechnology

Immunohistochemical analysis of paraffin-embedded mouse-kidney, antibody was diluted at 1:200



+86-27-59760950

ELKbio@ELKbiotech.com

www.elkbiotech.com

23-2, No.388 Gaoxin 2nd Road, Wuhan East Lake Hi-tech Development Zone, Hubei, P.R.C