



FOG-2 rabbit pAb

Cat No.:ES8410

For research use only

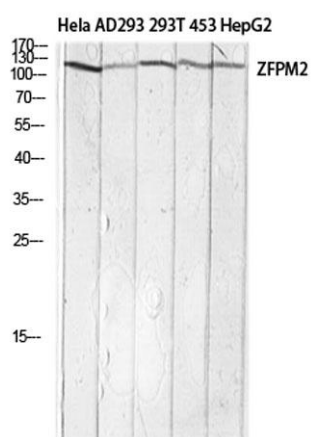
Overview

Product Name	FOG-2 rabbit pAb
Host species	Rabbit
Applications	WB;IHC;IF;ELISA
Species Cross-Reactivity	Human;Mouse
Recommended dilutions	Western Blot: 1/500 - 1/2000. IHC-p: 1:100-1:300. ELISA: 1/10000. Not yet tested in other applications.
Immunogen	The antiserum was produced against synthesized peptide derived from the Internal region of human ZFPM2. AA range:921-970
Specificity	FOG-2 Polyclonal Antibody detects endogenous levels of FOG-2 protein.
Formulation	Liquid in PBS containing 50% glycerol, 0.5% BSA and 0.02% sodium azide.
Storage	Store at -20°C. Avoid repeated freeze-thaw cycles.
Protein Name	Zinc finger protein ZFPM2
Gene Name	ZFPM2
Cellular localization	Nucleus .
Purification	The antibody was affinity-purified from rabbit antiserum by affinity-chromatography using epitope-specific immunogen.
Clonality	Polyclonal
Concentration	1 mg/ml
Observed band	128kD
Human Gene ID	23414
Human Swiss-Prot Number	Q8WW38
Alternative Names	ZFPM2; FOG2; ZNF89B; Zinc finger protein ZFPM2; Friend of GATA protein 2; FOG-2; Friend of GATA 2; hFOG-2; Zinc finger protein 89B; Zinc finger protein multitype 2
Background	zinc finger protein, FOG family member 2(ZFPM2) Homo sapiens The zinc finger protein encoded by this gene is a widely expressed member of the FOG family of transcription factors. The family

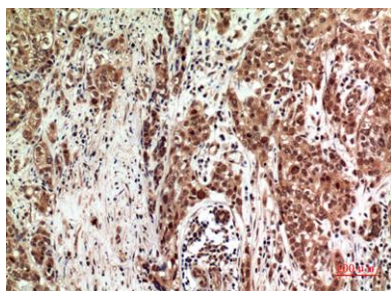




members modulate the activity of GATA family proteins, which are important regulators of hematopoiesis and cardiogenesis in mammals. It has been demonstrated that the protein can both activate and down-regulate expression of GATA-target genes, suggesting different modulation in different promoter contexts. A related mRNA suggests an alternatively spliced product but this information is not yet fully supported by the sequence. [provided by RefSeq, Jul 2008],



Western blot analysis of HeLa AD293 293T 453 HepG2 lysis using ZFPM2 antibody. Antibody was diluted at 1:1000. Secondary antibody(catalog#:RS0002) was diluted at 1:20000



Immunohistochemical analysis of paraffin-embedded human-breast-cancer, antibody was diluted at 1:100

