



## C32 rabbit pAb

Cat No.:ES8408

For research use only

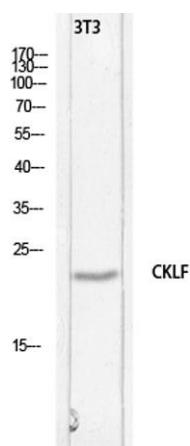
### Overview

<b>Product Name</b>	C32 rabbit pAb
<b>Host species</b>	Rabbit
<b>Applications</b>	WB;ELISA
<b>Species Cross-Reactivity</b>	Human;Rat;Mouse;
<b>Recommended dilutions</b>	Western Blot: 1/500 - 1/2000. ELISA: 1/10000. Not yet tested in other applications.
<b>Immunogen</b>	Synthesized peptide derived from Chemokine-like factor at AA range: 103-152
<b>Specificity</b>	C32 Polyclonal Antibody detects endogenous levels of C32 protein.
<b>Formulation</b>	Liquid in PBS containing 50% glycerol, 0.5% BSA and 0.02% sodium azide.
<b>Storage</b>	Store at -20°C. Avoid repeated freeze-thaw cycles.
<b>Protein Name</b>	Chemokine-like factor
<b>Gene Name</b>	CKLF
<b>Cellular localization</b>	[Isoform 1]: Secreted .; [Isoform 2]: Membrane ; Multi-pass membrane protein .; [Isoform 4]: Membrane ; Multi-pass membrane protein .
<b>Purification</b>	The antibody was affinity-purified from rabbit antiserum by affinity-chromatography using epitope-specific immunogen.
<b>Clonality</b>	Polyclonal
<b>Concentration</b>	1 mg/ml
<b>Observed band</b>	20kD
<b>Human Gene ID</b>	51192
<b>Human Swiss-Prot Number</b>	Q9UBR5
<b>Alternative Names</b>	CKLF; CKLF1; HSPC224; Chemokine-like factor; C32
<b>Background</b>	The product of this gene is a cytokine. Cytokines are small proteins that have an essential role in the immune and inflammatory responses. This gene is one of several chemokine-like factor genes located in a cluster on chromosome 16. The protein encoded by this gene is a potent chemoattractant





for neutrophils, monocytes and lymphocytes. It also can stimulate the proliferation of skeletal muscle cells. This protein may play important roles in inflammation and in the regeneration of skeletal muscle. Alternatively spliced transcript variants encoding different isoforms have been identified. Naturally occurring read-through transcription occurs between this locus and the neighboring locus CMTM1 (CKLF-like MARVEL transmembrane domain containing 1).[provided by RefSeq, Feb 2011],



Western blot analysis of 3T3 lysis using CKLF antibody.  
Secondary antibody(catalog#:RS0002) was diluted at  
1:20000

