



# SCGF rabbit pAb

Cat No.:ES8398

For research use only

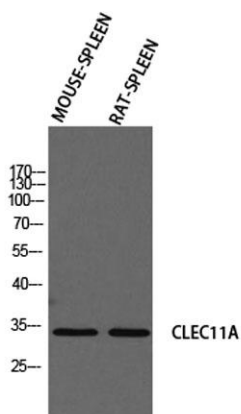
## Overview

<b>Product Name</b>	SCGF rabbit pAb
<b>Host species</b>	Rabbit
<b>Applications</b>	WB;IHC;IF;ELISA
<b>Species Cross-Reactivity</b>	Human;Mouse
<b>Recommended dilutions</b>	Western Blot: 1/500 - 1/2000. IHC-p: 1:100-1:300. ELISA: 1/10000. Not yet tested in other applications.
<b>Immunogen</b>	The antiserum was produced against synthesized peptide derived from the N-terminal region of human CLEC11A. AA range:1-50
<b>Specificity</b>	SCGF Polyclonal Antibody detects endogenous levels of SCGF protein.
<b>Formulation</b>	Liquid in PBS containing 50% glycerol, 0.5% BSA and 0.02% sodium azide.
<b>Storage</b>	Store at -20°C. Avoid repeated freeze-thaw cycles.
<b>Protein Name</b>	C-type lectin domain family 11 member A
<b>Gene Name</b>	CLEC11A
<b>Cellular localization</b>	Cytoplasm . Secreted .
<b>Purification</b>	The antibody was affinity-purified from rabbit antiserum by affinity-chromatography using epitope-specific immunogen.
<b>Clonality</b>	Polyclonal
<b>Concentration</b>	1 mg/ml
<b>Observed band</b>	30kD
<b>Human Gene ID</b>	6320
<b>Human Swiss-Prot Number</b>	Q9Y240
<b>Alternative Names</b>	CLEC11A; CLECSF3; LSLCL; SCGF; C-type lectin domain family 11 member A; C-type lectin superfamily member 3; Lymphocyte secreted C-type lectin; Stem cell growth factor; p47
<b>Background</b>	This gene encodes a member of the C-type lectin superfamily. The encoded protein is a secreted sulfated glycoprotein and functions as a growth factor for primitive hematopoietic progenitor cells.





An alternative splice variant has been described but its biological nature has not been determined. [provided by RefSeq, Jul 2008],



Western blot analysis of MOUSE-SPLEEN RAT-SPLEEN using CLEC11A antibody. Antibody was diluted at 1:2000. Secondary antibody(catalog#:RS0002) was diluted at 1:20000

Immunohistochemical analysis of paraffin-embedded human-skin, antibody was diluted at 1:100

