



p300 rabbit pAb

Cat No.:ES8374

For research use only

Overview

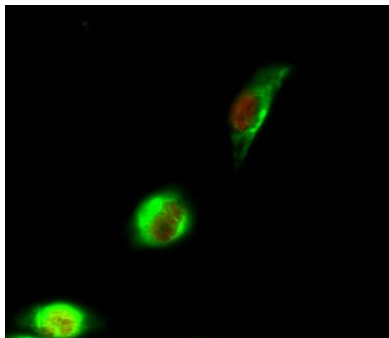
| | |
|---------------------------------|---|
| Product Name | p300 rabbit pAb |
| Host species | Rabbit |
| Applications | IF;WB;IHC;ELISA |
| Species Cross-Reactivity | Human;Mouse;Rat |
| Recommended dilutions | IF: 1:50-200 Western Blot: 1/500 - 1/2000. IHC-p: 1:100-1:300. ELISA: 1/10000. Not yet tested in other applications. |
| Immunogen | Synthesized peptide derived from the Internal region of human p300. |
| Specificity | p300 Polyclonal Antibody detects endogenous levels of p300 protein. |
| Formulation | Liquid in PBS containing 50% glycerol, 0.5% BSA and 0.02% sodium azide. |
| Storage | Store at -20°C. Avoid repeated freeze-thaw cycles. |
| Protein Name | Histone acetyltransferase p300 |
| Gene Name | EP300 |
| Cellular localization | Cytoplasm . Nucleus . Chromosome . Localizes to active chromatin: Colocalizes with histone H3 acetylated and/or crotonylated at 'Lys-18' (H3K18ac and H3K18cr, respectively) (PubMed:25818647). In the presence of ALX1 relocalizes from the cytoplasm to the nucleus. Colocalizes with ROCK2 in the nucleus (PubMed:12929931). . |
| Purification | The antibody was affinity-purified from rabbit antiserum by affinity-chromatography using epitope-specific immunogen. |
| Clonality | Polyclonal |
| Concentration | 1 mg/ml |
| Observed band | 300kD |
| Human Gene ID | 2033 |
| Human Swiss-Prot Number | Q09472 |
| Alternative Names | EP300; P300; Histone acetyltransferase p300; p300 HAT; E1A-associated protein p300 |



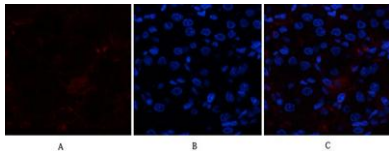


Background

E1A binding protein p300(EP300) Homo sapiens
This gene encodes the adenovirus E1A-associated cellular p300 transcriptional co-activator protein. It functions as histone acetyltransferase that regulates transcription via chromatin remodeling and is important in the processes of cell proliferation and differentiation. It mediates cAMP-gene regulation by binding specifically to phosphorylated CREB protein. This gene has also been identified as a co-activator of HIF1A (hypoxia-inducible factor 1 alpha), and thus plays a role in the stimulation of hypoxia-induced genes such as VEGF. Defects in this gene are a cause of Rubinstein-Taybi syndrome and may also play a role in epithelial cancer. [provided by RefSeq, Jul 2008],



Immunofluorescence analysis of HeLa cell. 1,p300 Polyclonal Antibody(red) was diluted at 1:200(4° overnight). p53 Monoclonal Antibody(6C4)(green) was diluted at 1:200(4° overnight). 2, Goat Anti Rabbit Alexa Fluor 594 Catalog:RS3611 was diluted at 1:1000(

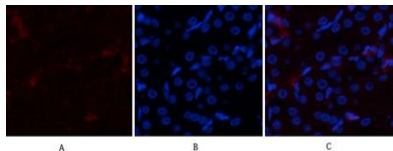


Immunofluorescence analysis of rat-kidney tissue. 1,p300 Polyclonal Antibody(red) was diluted at 1:200(4°C,overnight). 2, Cy3 labeled Secondary antibody was diluted at 1:300(room temperature, 50min).3, Picture B: DAPI(blue) 10min. Picture A:Target. Picture B: DAPI. Picture C: merge of A+B





Immunofluorescence analysis of rat-kidney tissue. 1,p300 Polyclonal Antibody(red) was diluted at 1:200(4°C,overnight). 2, Cy3 labeled Secondary antibody was diluted at 1:300(room temperature, 50min).3, Picture B: DAPI(blue) 10min. Picture A:Target. Picture



Immunohistochemical analysis of paraffin-embedded Human-uterus tissue. 1,p300 Polyclonal Antibody was diluted at 1:200(4°C,overnight). 2, Sodium citrate pH 6.0 was used for antibody retrieval(>98°C,20min). 3,Secondary antibody was diluted at 1:200(room temperature, 30min). Negative control was used by secondary antibody only.

