



Axl rabbit pAb

Cat No.:ES8372

For research use only

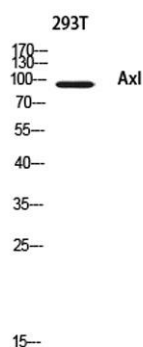
Overview

| | |
|---------------------------------|--|
| Product Name | Axl rabbit pAb |
| Host species | Rabbit |
| Applications | WB;ELISA |
| Species Cross-Reactivity | Human;Mouse;Rat |
| Recommended dilutions | Western Blot: 1/500 - 1/2000. ELISA: 1/10000. Not yet tested in other applications. |
| Immunogen | Synthesized peptide derived from Axl . at AA range: 630-710 |
| Specificity | Axl Polyclonal Antibody detects endogenous levels of Axl protein. |
| Formulation | Liquid in PBS containing 50% glycerol, 0.5% BSA and 0.02% sodium azide. |
| Storage | Store at -20°C. Avoid repeated freeze-thaw cycles. |
| Protein Name | Tyrosine-protein kinase receptor UFO |
| Gene Name | AXL UFO |
| Cellular localization | Cell membrane ; Single-pass type I membrane protein . |
| Purification | The antibody was affinity-purified from rabbit antiserum by affinity-chromatography using epitope-specific immunogen. |
| Clonality | Polyclonal |
| Concentration | 1 mg/ml |
| Observed band | 130kD |
| Human Gene ID | 558 |
| Human Swiss-Prot Number | P30530 |
| Alternative Names | AXL; UFO; Tyrosine-protein kinase receptor UFO; AXL oncogene |
| Background | The protein encoded by this gene is a member of the Tyro3-Axl-Mer (TAM) receptor tyrosine kinase subfamily. The encoded protein possesses an extracellular domain which is composed of two immunoglobulin-like motifs at the N-terminal, followed by two fibronectin type-III motifs. It |





transduces signals from the extracellular matrix into the cytoplasm by binding to the vitamin K-dependent protein growth arrest-specific 6 (Gas6). This gene may be involved in several cellular functions including growth, migration, aggregation and anti-inflammation in multiple cell types. Alternative splicing results in multiple transcript variants of this gene. [provided by RefSeq, Jul 2013],



Western blot analysis of 293T using Axl antibody.
Antibody was diluted at 1:500. Secondary antibody(catalog#:RS0002) was diluted at 1:20000

