



CD269 rabbit pAb

Cat No.:ES8369

For research use only

Overview

Product Name	CD269 rabbit pAb
Host species	Rabbit
Applications	WB;ELISA
Species Cross-Reactivity	Human;Rat;Mouse;
Recommended dilutions	Western Blot: 1/500 - 1/2000. ELISA: 1/10000. Not yet tested in other applications.
Immunogen	Synthesized peptide derived from the Internal region of human CD269.
Specificity	CD269 Polyclonal Antibody detects endogenous levels of CD269 protein.
Formulation	Liquid in PBS containing 50% glycerol, 0.5% BSA and 0.02% sodium azide.
Storage	Store at -20°C. Avoid repeated freeze-thaw cycles.
Protein Name	Tumor necrosis factor receptor superfamily member 17
Gene Name	TNFRSF17
Cellular localization	Cell membrane; Single-pass type III membrane protein. Endomembrane system; Single-pass type III membrane protein. Perinuclear Golgi-like structures.
Purification	The antibody was affinity-purified from rabbit antiserum by affinity-chromatography using epitope-specific immunogen.
Clonality	Polyclonal
Concentration	1 mg/ml
Observed band	20kD
Human Gene ID	608
Human Swiss-Prot Number	Q02223
Alternative Names	TNFRSF17; BCM; BCMA; Tumor necrosis factor receptor superfamily member 17; B-cell maturation protein; CD269
Background	The protein encoded by this gene is a member of the TNF-receptor superfamily. This receptor is preferentially expressed in mature B lymphocytes,

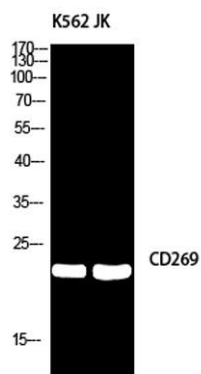




and may be important for B cell development and autoimmune response. This receptor has been shown to specifically bind to the tumor necrosis factor (ligand) superfamily, member 13b (TNFSF13B/TALL-1/BAFF), and to lead to NF-kappaB and MAPK8/JNK activation. This receptor also binds to various TRAF family members, and thus may transduce signals for cell survival and proliferation. [provided by RefSeq, Jul 2008],



Western blot analysis of L929 293T MCF7 HELA using CD269 antibody. Antibody was diluted at 1:2000. Secondary antibody(catalog#:RS0002) was diluted at 1:20000



Western blot analysis of K562/JK using CD269 antibody. Antibody was diluted at 1:2000. Secondary antibody(catalog#:RS0002) was diluted at 1:20000

