



# A20 rabbit pAb

Cat No.:ES8363

For research use only

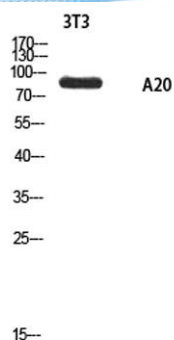
## Overview

<b>Product Name</b>	A20 rabbit pAb
<b>Host species</b>	Rabbit
<b>Applications</b>	WB;ELISA
<b>Species Cross-Reactivity</b>	Human;Rat;Mouse;
<b>Recommended dilutions</b>	Western Blot: 1/500 - 1/2000. ELISA: 1/10000. Not yet tested in other applications.
<b>Immunogen</b>	Synthesized peptide derived from the Internal region of human A20.
<b>Specificity</b>	A20 Polyclonal Antibody detects endogenous levels of A20 protein.
<b>Formulation</b>	Liquid in PBS containing 50% glycerol, 0.5% BSA and 0.02% sodium azide.
<b>Storage</b>	Store at -20°C. Avoid repeated freeze-thaw cycles.
<b>Protein Name</b>	Ankyrin repeat domain-containing protein 20A1
<b>Gene Name</b>	ANKRD20A1
<b>Cellular localization</b>	plasma membrane,
<b>Purification</b>	The antibody was affinity-purified from rabbit antiserum by affinity-chromatography using epitope-specific immunogen.
<b>Clonality</b>	Polyclonal
<b>Concentration</b>	1 mg/ml
<b>Observed band</b>	95kD
<b>Human Gene ID</b>	84210
<b>Human Swiss-Prot Number</b>	Q5TYW2
<b>Alternative Names</b>	ANKRD20A1; ANKRD20A; Ankyrin repeat domain-containing protein 20A1
<b>Background</b>	similarity:Contains 5 ANK repeats.,tissue specificity:Widely expressed; not found in kidney, nor in liver.,





**ELK Biotechnology**



Western blot analysis of 3T3 using A20 antibody.  
Secondary antibody(catalog#:RS0002) was diluted at  
1:20000



+86-27-59760950

[ELKbio@ELKbiotech.com](mailto:ELKbio@ELKbiotech.com)

[www.elkbiotech.com](http://www.elkbiotech.com)

23-2, No.388 Gaoxin 2nd Road,Wuhan East Lake Hi-tech Development Zone, Hubei , P.R.C