



# SR-1D rabbit pAb

Cat No.:ES8353

For research use only

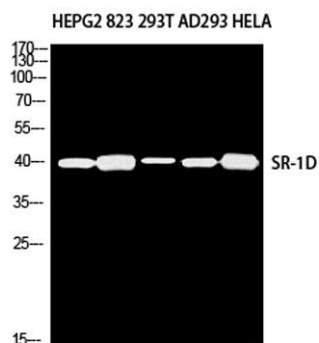
## Overview

<b>Product Name</b>	SR-1D rabbit pAb
<b>Host species</b>	Rabbit
<b>Applications</b>	WB;IHC;IF;ELISA
<b>Species Cross-Reactivity</b>	Human;Mouse;Rat
<b>Recommended dilutions</b>	Western Blot: 1/500 - 1/2000. IHC-p: 1:100-1:300. ELISA: 1/10000. Not yet tested in other applications.
<b>Immunogen</b>	Synthesized peptide derived from SR-1D . at AA range: 120-200
<b>Specificity</b>	SR-1D Polyclonal Antibody detects endogenous levels of SR-1D protein.
<b>Formulation</b>	Liquid in PBS containing 50% glycerol, 0.5% BSA and 0.02% sodium azide.
<b>Storage</b>	Store at -20°C. Avoid repeated freeze-thaw cycles.
<b>Protein Name</b>	5-hydroxytryptamine receptor 1D
<b>Gene Name</b>	HTR1D
<b>Cellular localization</b>	Cell membrane ; Multi-pass membrane protein .
<b>Purification</b>	The antibody was affinity-purified from rabbit antiserum by affinity-chromatography using epitope-specific immunogen.
<b>Clonality</b>	Polyclonal
<b>Concentration</b>	1 mg/ml
<b>Observed band</b>	41kD
<b>Human Gene ID</b>	3352
<b>Human Swiss-Prot Number</b>	P28221
<b>Alternative Names</b>	HTR1D; HTR1DA; HTRL; 5-hydroxytryptamine receptor 1D; 5-HT-1D; 5-HT1D; 5-HT-1D-alpha; Serotonin receptor 1D
<b>Background</b>	function:This is one of the several different receptors for 5-hydroxytryptamine (serotonin), a biogenic hormone that functions as a neurotransmitter, a hormone, and a mitogen. The activity of this receptor is mediated by G proteins that inhibit adenylate cyclase





activity, similarity: Belongs to the G-protein coupled receptor 1 family,



Western blot analysis of HEPG2 823 293T AD293 HELA using SR-1D antibody. Antibody was diluted at 1:500. Secondary antibody (catalog#: RS0002) was diluted at 1:20000

Immunohistochemical analysis of paraffin-embedded human-brain, antibody was diluted at 1:100

