



# Mob3A/B rabbit pAb

Cat No.:ES8352

For research use only

## Overview

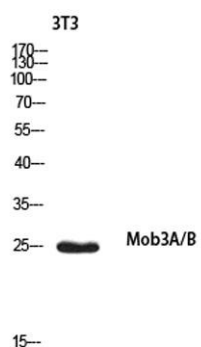
<b>Product Name</b>	Mob3A/B rabbit pAb
<b>Host species</b>	Rabbit
<b>Applications</b>	WB;IHC;IF;ELISA
<b>Species Cross-Reactivity</b>	Human;Mouse
<b>Recommended dilutions</b>	Western Blot: 1/500 - 1/2000. IHC-p: 1:100-1:300. ELISA: 1/10000. Not yet tested in other applications.
<b>Immunogen</b>	Synthesized peptide derived from Mob3A/B . at AA range: 1-80
<b>Specificity</b>	Mob3A/B Polyclonal Antibody detects endogenous levels of Mob3A/B protein.
<b>Formulation</b>	Liquid in PBS containing 50% glycerol, 0.5% BSA and 0.02% sodium azide.
<b>Storage</b>	Store at -20°C. Avoid repeated freeze-thaw cycles.
<b>Protein Name</b>	Mps one binder kinase activator-like 2A/B
<b>Gene Name</b>	MMOBKL2A/MMOBKL2B
<b>Cellular localization</b>	intracellular,
<b>Purification</b>	The antibody was affinity-purified from rabbit antiserum by affinity-chromatography using epitope-specific immunogen.
<b>Clonality</b>	Polyclonal
<b>Concentration</b>	1 mg/ml
<b>Observed band</b>	25kD
<b>Human Gene ID</b>	126308
<b>Human Swiss-Prot Number</b>	Q96BX8
<b>Alternative Names</b>	MOB3A; MOBKL2A; MOB kinase activator 3A; MOB-LAK; Mob1 homolog 2A; Mps one binder kinase activator-like 2A; MOB3B; MOBKL2B; MOB kinase activator 3B; Mob1 homolog 2b; Mps one binder kinase activator-like 2B
<b>Background</b>	function:May regulate the activity of kinases.,sequence caution:Chimera. There is an inclusion of DNA from another gene in position 141.,similarity:Belongs to the MOB1/phocein





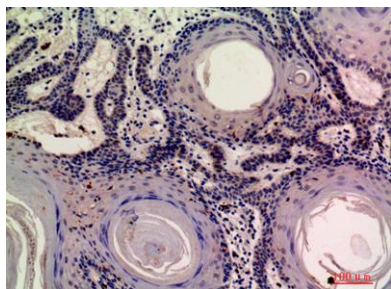
**ELK Biotechnology**

family.,



Western blot analysis of 3T3 using Mob3A/B antibody.  
Secondary antibody(catalog#:RS0002) was diluted at  
1:20000

Immunohistochemical analysis of paraffin-embedded  
human-skin, antibody was diluted at 1:200



+86-27-59760950

[ELKbio@ELKbiotech.com](mailto:ELKbio@ELKbiotech.com)

[www.elkbiotech.com](http://www.elkbiotech.com)

23-2, No.388 Gaoxin 2nd Road,Wuhan East Lake Hi-tech Development Zone, Hubei , P.R.C