



# IP3R-I rabbit pAb

Cat No.:ES8348

For research use only

## Overview

<b>Product Name</b>	IP3R-I rabbit pAb
<b>Host species</b>	Rabbit
<b>Applications</b>	WB;IHC
<b>Species Cross-Reactivity</b>	Human;Mouse;Rat
<b>Recommended dilutions</b>	WB 1:500-2000;IHC-p 1:50-300
<b>Immunogen</b>	Synthesized peptide derived from IP3R-I . at AA range: 1700-1780
<b>Specificity</b>	IP3R-I Polyclonal Antibody detects endogenous levels of IP3R-I protein.
<b>Formulation</b>	Liquid in PBS containing 50% glycerol, 0.5% BSA and 0.02% sodium azide.
<b>Storage</b>	Store at -20°C. Avoid repeated freeze-thaw cycles.
<b>Protein Name</b>	Inositol 1,4,5-trisphosphate receptor type 1
<b>Gene Name</b>	ITPR1
<b>Cellular localization</b>	Endoplasmic reticulum membrane ; Multi-pass membrane protein . Cytoplasmic vesicle, secretory vesicle membrane ; Multi-pass membrane protein . Cytoplasm, perinuclear region . Endoplasmic reticulum and secretory granules (By similarity) .
<b>Purification</b>	The antibody was affinity-purified from rabbit antiserum by affinity-chromatography using epitope-specific immunogen.
<b>Clonality</b>	Polyclonal
<b>Concentration</b>	1 mg/ml
<b>Observed band</b>	320kD
<b>Human Gene ID</b>	3708
<b>Human Swiss-Prot Number</b>	Q14643
<b>Alternative Names</b>	ITPR1; INSP3R1; Inositol 1,4,5-trisphosphate receptor type 1; IP3 receptor isoform 1; IP3R 1; InsP3R1; Type 1 inositol 1,4,5-trisphosphate receptor; Type 1 InsP3 receptor
<b>Background</b>	This gene encodes an intracellular receptor for inositol 1,4,5-trisphosphate. Upon stimulation by





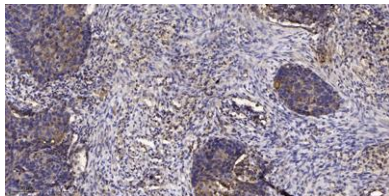
inositol 1,4,5-trisphosphate, this receptor mediates calcium release from the endoplasmic reticulum. Mutations in this gene cause spinocerebellar ataxia type 15, a disease associated with an heterogeneous group of cerebellar disorders. Multiple transcript variants have been identified for this gene. [provided by RefSeq, Nov 2009],

293T

Western blot analysis of 293T using IP3R-I antibody. Antibody was diluted at 1:500. Secondary antibody(catalog#:RS0002) was diluted at 1:20000

— IP3R-I

170—  
150—  
100—  
70—  
55—  
40—  
35—  
25—



Immunohistochemical analysis of paraffin-embedded human Squamous cell carcinoma of lung. 1, Antibody was diluted at 1:200(4° overnight). 2, Tris-EDTA,pH9.0 was used for antigen retrieval. 3,Secondary antibody was diluted at 1:200(room temperature, 45min).

