



# Rec8 rabbit pAb

Cat No.:ES8151

For research use only

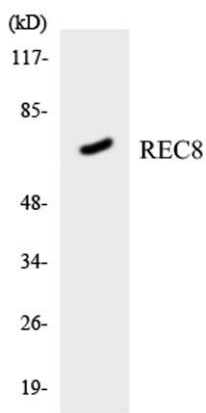
## Overview

<b>Product Name</b>	Rec8 rabbit pAb
<b>Host species</b>	Rabbit
<b>Applications</b>	WB;ELISA;IHC
<b>Species Cross-Reactivity</b>	Human;Rat;Mouse;
<b>Recommended dilutions</b>	WB 1:500-2000;IHC-p 1:50-300; ELISA 2000-20000
<b>Immunogen</b>	The antiserum was produced against synthesized peptide derived from human REC8. AA range:154-203
<b>Specificity</b>	Rec8 Polyclonal Antibody detects endogenous levels of Rec8 protein.
<b>Formulation</b>	Liquid in PBS containing 50% glycerol, 0.5% BSA and 0.02% sodium azide.
<b>Storage</b>	Store at -20°C. Avoid repeated freeze-thaw cycles.
<b>Protein Name</b>	Meiotic recombination protein REC8 homolog
<b>Gene Name</b>	REC8
<b>Cellular localization</b>	Nucleus . Chromosome . Chromosome, centromere . In meiotic chromosomes, localized along axial elements in prophase from the leptotene to diplotene stages. At later prophase stages, diakinesis and metaphase I, localized along interstitial axes of chromosom
<b>Purification</b>	The antibody was affinity-purified from rabbit antiserum by affinity-chromatography using epitope-specific immunogen.
<b>Clonality</b>	Polyclonal
<b>Concentration</b>	1 mg/ml
<b>Observed band</b>	62kD
<b>Human Gene ID</b>	9985
<b>Human Swiss-Prot Number</b>	O95072
<b>Alternative Names</b>	REC8; REC8L1; Meiotic recombination protein REC8 homolog; Cohesin Rec8p
<b>Background</b>	This gene encodes a member of the kleisin family of SMC (structural maintenance of chromosome)

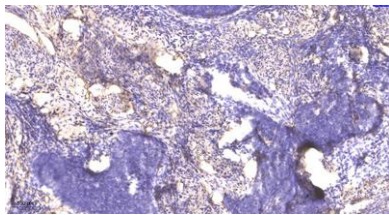




protein partners. The protein localizes to the axial elements of chromosomes during meiosis in both oocytes and spermatocytes. In the mouse, the homologous protein is a key component of the meiotic cohesion complex, which regulates sister chromatid cohesion and recombination between homologous chromosomes. Multiple alternatively spliced variants, encoding the same protein, have been found for this gene. [provided by RefSeq, Jul 2008],



Western blot analysis of the lysates from HT-29 cells using REC8 antibody.



Immunohistochemical analysis of paraffin-embedded human cervical carcinoma. 1, Antibody was diluted at 1:200(4° overnight). 2, Tris-EDTA,pH9.0 was used for antigen retrieval. 3,Secondary antibody was diluted at 1:200(room temperature, 45min).

