



Cleaved-CD97 α (L530) rabbit pAb

Cat No.:ES8096

For research use only

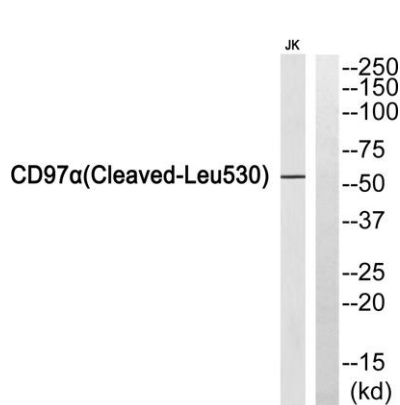
Overview

Product Name	Cleaved-CD97 α (L530) rabbit pAb
Host species	Rabbit
Applications	WB;ELISA
Species Cross-Reactivity	Human;Rat;Mouse;
Recommended dilutions	Western Blot: 1/500 - 1/2000. ELISA: 1/5000. Not yet tested in other applications.
Immunogen	The antiserum was produced against synthesized peptide derived from human CD97 α . AA range:481-530
Specificity	Cleaved-CD97 α (L530) Polyclonal Antibody detects endogenous levels of fragment of activated CD97 α protein resulting from cleavage adjacent to L530.
Formulation	Liquid in PBS containing 50% glycerol, 0.5% BSA and 0.02% sodium azide.
Storage	Store at -20°C. Avoid repeated freeze-thaw cycles.
Protein Name	CD97 antigen
Gene Name	CD97
Cellular localization	Cell membrane ; Multi-pass membrane protein ; [Adhesion G protein-coupled receptor E5 subunit alpha]: Secreted, extracellular space .
Purification	The antibody was affinity-purified from rabbit antiserum by affinity-chromatography using epitope-specific immunogen.
Clonality	Polyclonal
Concentration	1 mg/ml
Observed band	55kD
Human Gene ID	976
Human Swiss-Prot Number	P48960
Alternative Names	CD97; CD97 antigen; Leukocyte antigen CD97; CD antigen CD97
Background	This gene encodes a member of the EGF-TM7 subfamily of adhesion G protein-coupled receptors, which mediate cell-cell interactions. These proteins





are cleaved by self-catalytic proteolysis into a large extracellular subunit and seven-span transmembrane subunit, which associate at the cell surface as a receptor complex. The encoded protein may play a role in cell adhesion as well as leukocyte recruitment, activation and migration, and contains multiple extracellular EGF-like repeats which mediate binding to chondroitin sulfate and the cell surface complement regulatory protein CD55. Expression of this gene may play a role in the progression of several types of cancer. Alternatively spliced transcript variants encoding multiple isoforms with 3 to 5 EGF-like repeats have been observed for this gene. This gene is found in a cluster with other EGF-TM7 genes on the short arm of chromosome 1



Western blot analysis of CD97alpha (Cleaved-Leu530)

Antibody. The lane on the right is blocked with the CD97alpha (Cleaved-Leu530) peptide.

