



RN-tre rabbit pAb

Cat No.:ES8089

For research use only

Overview

Product Name	RN-tre rabbit pAb
Host species	Rabbit
Applications	IHC;IF;ELISA
Species Cross-Reactivity	Human;Rat;Mouse;
Recommended dilutions	Immunohistochemistry: 1/100 - 1/300. ELISA: 1/10000. Not yet tested in other applications.
Immunogen	The antiserum was produced against synthesized peptide derived from human USP6NL. AA range:451-500
Specificity	RN-tre Polyclonal Antibody detects endogenous levels of RN-tre protein.
Formulation	Liquid in PBS containing 50% glycerol, 0.5% BSA and 0.02% sodium azide.
Storage	Store at -20°C. Avoid repeated freeze-thaw cycles.
Protein Name	USP6 N-terminal-like protein
Gene Name	USP6NL
Cellular localization	Golgi apparatus. Cytoplasmic vesicle.
Purification	The antibody was affinity-purified from rabbit antiserum by affinity-chromatography using epitope-specific immunogen.
Clonality	Polyclonal
Concentration	1 mg/ml
Observed band	
Human Gene ID	9712
Human Swiss-Prot Number	Q92738
Alternative Names	USP6NL; KIAA0019; USP6 N-terminal-like protein; Related to the N-terminus of tre; RN-tre
Background	function:Acts as a GTPase-activating protein for RAB5A. Involved in receptor trafficking. In complex with EPS8 inhibits internalization of EGFR.,PTM:Phosphorylated upon DNA damage, probably by ATM or ATR.,similarity:Contains 1 Rab-GAP TBC domain.,subunit:Interacts with

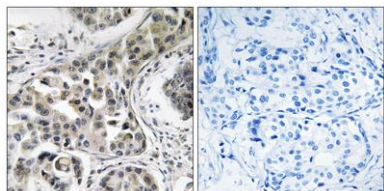




ELK Biotechnology

EPS8.,tissue specificity:Widely expressed.,

Immunohistochemistry analysis of paraffin-embedded human breast carcinoma, using USP6NL Antibody. The picture on the right is blocked with the synthesized peptide.



+86-27-59760950

ELKbio@ELKbiotech.com

www.elkbiotech.com

23-2, No.388 Gaoxin 2nd Road,Wuhan East Lake Hi-tech Development Zone, Hubei , P.R.C