



Nup93 rabbit pAb

Cat No.:ES8086

For research use only

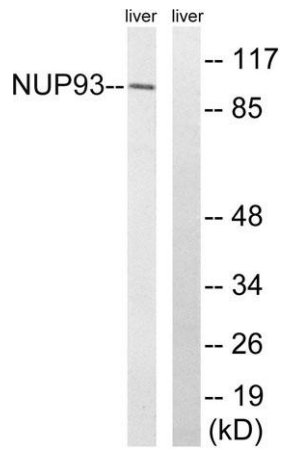
Overview

Product Name	Nup93 rabbit pAb
Host species	Rabbit
Applications	WB;ELISA
Species Cross-Reactivity	Human;Mouse;Rat
Recommended dilutions	Western Blot: 1/500 - 1/2000. ELISA: 1/40000. Not yet tested in other applications.
Immunogen	The antiserum was produced against synthesized peptide derived from human NUP93. AA range:221-270
Specificity	Nup93 Polyclonal Antibody detects endogenous levels of Nup93 protein.
Formulation	Liquid in PBS containing 50% glycerol, 0.5% BSA and 0.02% sodium azide.
Storage	Store at -20°C. Avoid repeated freeze-thaw cycles.
Protein Name	Nuclear pore complex protein Nup93
Gene Name	NUP93
Cellular localization	Nucleus membrane ; Peripheral membrane protein . Nucleus, nuclear pore complex . Nucleus envelope . Localizes at the nuclear basket and at or near the nuclear entry to the gated channel of the pore. .
Purification	The antibody was affinity-purified from rabbit antiserum by affinity-chromatography using epitope-specific immunogen.
Clonality	Polyclonal
Concentration	1 mg/ml
Observed band	93kD
Human Gene ID	9688
Human Swiss-Prot Number	Q8N1F7
Alternative Names	NUP93; KIAA0095; Nuclear pore complex protein Nup93; 93 kDa nucleoporin; Nucleoporin Nup93
Background	function:Part of the nucleoporin complex; required for correct nuclear pore assembly.,similarity:Belongs to the nucleoporin interacting component (NIC)





family,subcellular location:Localizes at the nuclear basket and at or near the nuclear entry to the gated channel of the pore.,subunit:Component of the p62 complex, a complex composed of NUP62, NUP54. Interacts also with NUP205.,



Western blot analysis of lysates from rat liver cells, using NUP93 Antibody. The lane on the right is blocked with the synthesized peptide.

