



# CRSP34 rabbit pAb

Cat No.:ES8046

For research use only

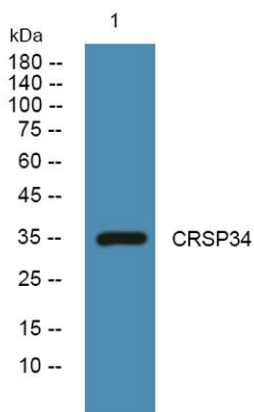
## Overview

<b>Product Name</b>	CRSP34 rabbit pAb
<b>Host species</b>	Rabbit
<b>Applications</b>	WB;ELISA
<b>Species Cross-Reactivity</b>	Human;Mouse
<b>Recommended dilutions</b>	Western Blot: 1/500 - 1/2000. ELISA: 1/10000. Not yet tested in other applications.
<b>Immunogen</b>	Synthesized peptide derived from CRSP34 . at AA range: 90-170
<b>Specificity</b>	CRSP34 Polyclonal Antibody detects endogenous levels of CRSP34 protein.
<b>Formulation</b>	Liquid in PBS containing 50% glycerol, 0.5% BSA and 0.02% sodium azide.
<b>Storage</b>	Store at -20°C. Avoid repeated freeze-thaw cycles.
<b>Protein Name</b>	Mediator of RNA polymerase II transcription subunit 27
<b>Gene Name</b>	MED27
<b>Cellular localization</b>	Nucleus .
<b>Purification</b>	The antibody was affinity-purified from rabbit antiserum by affinity-chromatography using epitope-specific immunogen.
<b>Clonality</b>	Polyclonal
<b>Concentration</b>	1 mg/ml
<b>Observed band</b>	35kD
<b>Human Gene ID</b>	9442
<b>Human Swiss-Prot Number</b>	Q6P2C8
<b>Alternative Names</b>	MED27; CRSP34; CRSP8; Mediator of RNA polymerase II transcription subunit 27; Cofactor required for Sp1 transcriptional activation subunit 8; CRSP complex subunit 8; Mediator complex subunit 27; P37 TRAP/SMCC/PC2 subunit; Transcriptional co
<b>Background</b>	The activation of gene transcription is a multistep process that is triggered by factors that recognize transcriptional enhancer sites in DNA. These factors





work with co-activators to direct transcriptional initiation by the RNA polymerase II apparatus. The protein encoded by this gene is a subunit of the CRSP (cofactor required for SP1 activation) complex, which, along with TFIID, is required for efficient activation by SP1. This protein is also a component of other multisubunit complexes e.g. thyroid hormone receptor-(TR-) associated proteins which interact with TR and facilitate TR function on DNA templates in conjunction with initiation factors and cofactors. Alternatively spliced transcript variants encoding multiple isoforms have been observed for this gene, and a pseudogene of this gene is located on the long arm of chromosome 5. [provided by RefSeq, Dec 2011],



Western blot analysis of lysates from K562 cells, primary antibody was diluted at 1:1000, 4°over night

