



Ribosomal Protein L23 rabbit pAb

Cat No.:ES8025

For research use only

Overview

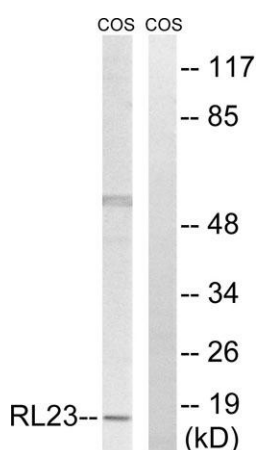
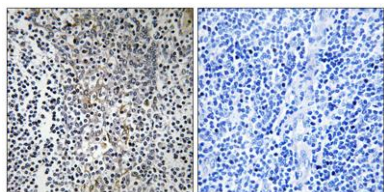
Product Name	Ribosomal Protein L23 rabbit pAb
Host species	Rabbit
Applications	WB;IHC;IF;ELISA
Species Cross-Reactivity	Human;Mouse;Rat;Monkey
Recommended dilutions	Western Blot: 1/500 - 1/2000. Immunohistochemistry: 1/100 - 1/300. ELISA: 1/40000. Not yet tested in other applications.
Immunogen	The antiserum was produced against synthesized peptide derived from human RPL23. AA range:51-100
Specificity	Ribosomal Protein L23 Polyclonal Antibody detects endogenous levels of Ribosomal Protein L23 protein.
Formulation	Liquid in PBS containing 50% glycerol, 0.5% BSA and 0.02% sodium azide.
Storage	Store at -20°C. Avoid repeated freeze-thaw cycles.
Protein Name	60S ribosomal protein L23
Gene Name	RPL23
Cellular localization	nucleolus,cytoplasm,cytosol,ribosome,focal adhesion,membrane,cytosolic large ribosomal subunit,extracellular matrix,extracellular exosome,
Purification	The antibody was affinity-purified from rabbit antiserum by affinity-chromatography using epitope-specific immunogen.
Clonality	Polyclonal
Concentration	1 mg/ml
Observed band	15kD
Human Gene ID	9349
Human Swiss-Prot Number	P62829
Alternative Names	RPL23; 60S ribosomal protein L23; 60S ribosomal protein L17
Background	Ribosomes, the organelles that catalyze protein synthesis, consist of a small 40S subunit and a large 60S subunit. Together these subunits are composed





of 4 RNA species and approximately 80 structurally distinct proteins. This gene encodes a ribosomal protein that is a component of the 60S subunit. The protein belongs to the L14P family of ribosomal proteins. It is located in the cytoplasm. This gene has been referred to as rpL17 because the encoded protein shares amino acid identity with ribosomal protein L17 from *Saccharomyces cerevisiae*; however, its official symbol is RPL23. As is typical for genes encoding ribosomal proteins, there are multiple processed pseudogenes of this gene dispersed through the genome. [provided by RefSeq, Jul 2008],

Immunohistochemistry analysis of paraffin-embedded human tonsil tissue, using RPL23 Antibody. The picture on the right is blocked with the synthesized peptide.



Western blot analysis of lysates from COS7 cells, using RPL23 Antibody. The lane on the right is blocked with the synthesized peptide.

