



# TRIP13 rabbit pAb

Cat No.:ES8020

For research use only

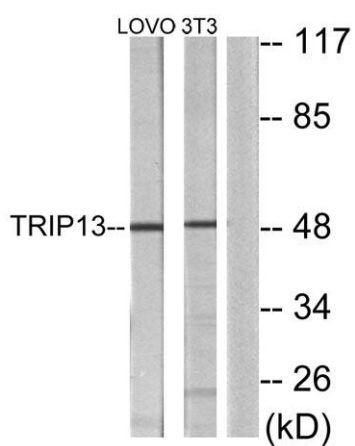
## Overview

<b>Product Name</b>	TRIP13 rabbit pAb
<b>Host species</b>	Rabbit
<b>Applications</b>	WB;IHC;IF;ELISA
<b>Species Cross-Reactivity</b>	Human;Mouse;Rat
<b>Recommended dilutions</b>	Western Blot: 1/500 - 1/2000. ELISA: 1/10000. Not yet tested in other applications.
<b>Immunogen</b>	The antiserum was produced against synthesized peptide derived from human TRIP13. AA range:383-432
<b>Specificity</b>	TRIP13 Polyclonal Antibody detects endogenous levels of TRIP13 protein.
<b>Formulation</b>	Liquid in PBS containing 50% glycerol, 0.5% BSA and 0.02% sodium azide.
<b>Storage</b>	Store at -20°C. Avoid repeated freeze-thaw cycles.
<b>Protein Name</b>	Pachytene checkpoint protein 2 homolog
<b>Gene Name</b>	TRIP13
<b>Cellular localization</b>	male germ cell nucleus,nucleus,
<b>Purification</b>	The antibody was affinity-purified from rabbit antiserum by affinity-chromatography using epitope-specific immunogen.
<b>Clonality</b>	Polyclonal
<b>Concentration</b>	1 mg/ml
<b>Observed band</b>	48kD
<b>Human Gene ID</b>	9319
<b>Human Swiss-Prot Number</b>	Q15645
<b>Alternative Names</b>	TRIP13; PCH2; Pachytene checkpoint protein 2 homolog; Human papillomavirus type 16 E1 protein-binding protein; 16E1-BP; HPV16 E1 protein-binding protein; Thyroid hormone receptor interactor 13; Thyroid receptor-interacting protein 13; TR-in
<b>Background</b>	This gene encodes a protein that interacts with thyroid hormone receptors, also known as





hormone-dependent transcription factors. The gene product interacts specifically with the ligand binding domain. This gene is one of several that may play a role in early-stage non-small cell lung cancer. [provided by RefSeq, Oct 2009],



Western blot analysis of lysates from LOVO and NIH/3T3 cells, using TRIP13 Antibody. The lane on the right is blocked with the synthesized peptide.

