



# CCDC102A rabbit pAb

Cat No.:ES8012

For research use only

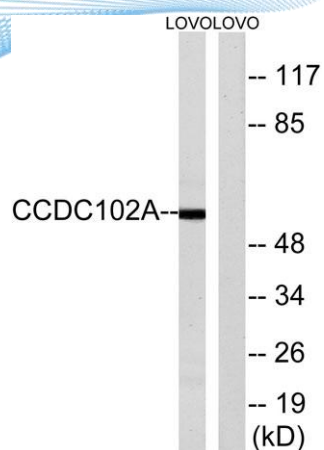
## Overview

<b>Product Name</b>	CCDC102A rabbit pAb
<b>Host species</b>	Rabbit
<b>Applications</b>	WB;ELISA
<b>Species Cross-Reactivity</b>	Human;Mouse
<b>Recommended dilutions</b>	Western Blot: 1/500 - 1/2000. ELISA: 1/20000. Not yet tested in other applications.
<b>Immunogen</b>	The antiserum was produced against synthesized peptide derived from human CCDC102A. AA range:341-390
<b>Specificity</b>	CCDC102A Polyclonal Antibody detects endogenous levels of CCDC102A protein.
<b>Formulation</b>	Liquid in PBS containing 50% glycerol, 0.5% BSA and 0.02% sodium azide.
<b>Storage</b>	Store at -20°C. Avoid repeated freeze-thaw cycles.
<b>Protein Name</b>	Coiled-coil domain-containing protein 102A
<b>Gene Name</b>	CCDC102A
<b>Cellular localization</b>	myosin complex,
<b>Purification</b>	The antibody was affinity-purified from rabbit antiserum by affinity-chromatography using epitope-specific immunogen.
<b>Clonality</b>	Polyclonal
<b>Concentration</b>	1 mg/ml
<b>Observed band</b>	55kD
<b>Human Gene ID</b>	92922
<b>Human Swiss-Prot Number</b>	Q96A19
<b>Alternative Names</b>	CCDC102A; Coiled-coil domain-containing protein 102A
<b>Background</b>	CCDC102A (Coiled-Coil Domain Containing 102A) is a Protein Coding gene. An important paralog of this gene is CCDC102B.

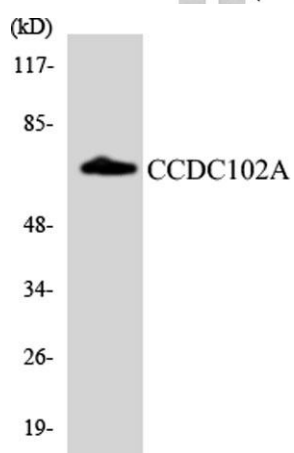




**ELK Biotechnology**



Western blot analysis of lysates from LOVO cells, using CCDC102A Antibody. The lane on the right is blocked with the synthesized peptide.



Western blot analysis of the lysates from HepG2 cells using CCDC102A antibody.



+86-27-59760950

[ELKbio@ELKbiotech.com](mailto:ELKbio@ELKbiotech.com)

[www.elkbiotech.com](http://www.elkbiotech.com)

23-2, No.388 Gaoxin 2nd Road,Wuhan East Lake Hi-tech Development Zone, Hubei , P.R.C