



ARK-2 (phospho Tyr12) rabbit pAb

Cat No.:ES7990

For research use only

Overview

Product Name	ARK-2 (phospho Tyr12) rabbit pAb
Host species	Rabbit
Applications	WB;IHC;IF;ELISA
Species Cross-Reactivity	Human;Mouse;Rat
Recommended dilutions	Western Blot: 1/500 - 1/2000. Immunohistochemistry: 1/100 - 1/300. ELISA: 1/10000. Not yet tested in other applications.
Immunogen	The antiserum was produced against synthesized peptide derived from human AurB around the phosphorylation site of Tyr12. AA range:1-50
Specificity	Phospho-ARK-2 (Y12) Polyclonal Antibody detects endogenous levels of ARK-2 protein only when phosphorylated at Y12.
Formulation	Liquid in PBS containing 50% glycerol, 0.5% BSA and 0.02% sodium azide.
Storage	Store at -20°C. Avoid repeated freeze-thaw cycles.
Protein Name	Aurora kinase B
Gene Name	AURKB
Cellular localization	Nucleus . Chromosome . Chromosome, centromere . Chromosome, centromere, kinetochore . Cytoplasm, cytoskeleton, spindle . Midbody . Localizes on chromosome arms and inner centromeres from prophase through metaphase and then transferring to the spindle midz
Purification	The antibody was affinity-purified from rabbit antiserum by affinity-chromatography using epitope-specific immunogen.
Clonality	Polyclonal
Concentration	1 mg/ml
Observed band	39kD
Human Gene ID	9212
Human Swiss-Prot Number	Q96GD4
Alternative Names	AURKB; AIK2; AIM1; AIRK2; ARK2; STK1; STK12;

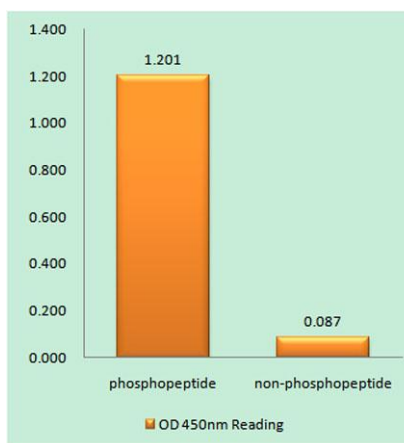




Background

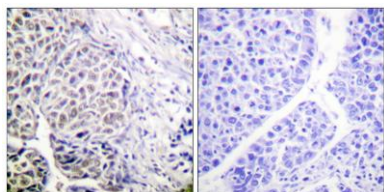
STK5; Aurora kinase B; Aurora 1; Aurora- and IPL1-like midbody-associated protein 1; AIM-1; Aurora/IPL1-related kinase 2; ARK-2; Aurora-related kinase 2; STK-1; Serine/threonine-protein kinase 12

This gene encodes a member of the aurora kinase subfamily of serine/threonine kinases. The genes encoding the other two members of this subfamily are located on chromosomes 19 and 20. These kinases participate in the regulation of alignment and segregation of chromosomes during mitosis and meiosis through association with microtubules. A pseudogene of this gene is located on chromosome 8. Alternatively spliced transcript variants have been found for this gene. [provided by RefSeq, Sep 2015],



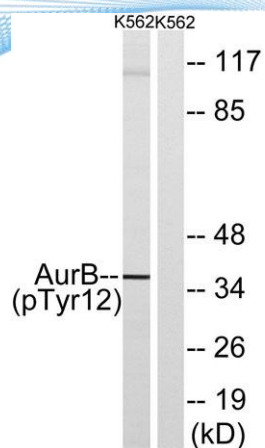
Enzyme-Linked Immunosorbent Assay (Phospho-ELISA) for Immunogen Phosphopeptide (Phospho-left) and Non-Phosphopeptide (Phospho-right), using AurB (Phospho-Tyr12) Antibody

Immunohistochemistry analysis of paraffin-embedded human liver carcinoma, using AurB (Phospho-Tyr12) Antibody. The picture on the right is blocked with the phospho peptide.





ELK Biotechnology



Western blot analysis of lysates from K562 cells, using AurB (Phospho-Tyr12) Antibody. The lane on the right is blocked with the phospho peptide.



+86-27-59760950

ELKbio@ELKbiotech.com

www.elkbiotech.com

23-2, No.388 Gaoxin 2nd Road, Wuhan East Lake Hi-tech Development Zone, Hubei, P.R.C.