



RASL10B rabbit pAb

Cat No.:ES7975

For research use only

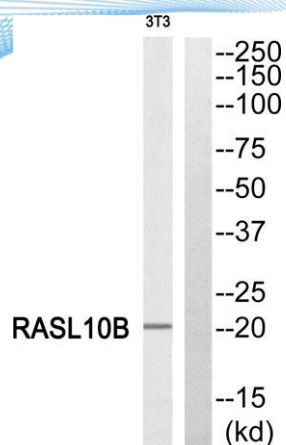
Overview

Product Name	RASL10B rabbit pAb
Host species	Rabbit
Applications	WB;IHC
Species Cross-Reactivity	Human;Mouse
Recommended dilutions	WB 1:500-2000;IHC-p 1:50-300
Immunogen	Synthesized peptide derived from RASL10B . at AA range: 80-160
Specificity	RASL10B Polyclonal Antibody detects endogenous levels of RASL10B protein.
Formulation	Liquid in PBS containing 50% glycerol, 0.5% BSA and 0.02% sodium azide.
Storage	Store at -20°C. Avoid repeated freeze-thaw cycles.
Protein Name	Ras-like protein family member 10B
Gene Name	RASL10B
Cellular localization	Cell membrane ; Lipid-anchor ; Cytoplasmic side .
Purification	The antibody was affinity-purified from rabbit antiserum by affinity-chromatography using epitope-specific immunogen.
Clonality	Polyclonal
Concentration	1 mg/ml
Observed band	22kD
Human Gene ID	91608
Human Swiss-Prot Number	Q96S79
Alternative Names	RASL10B; Ras-like protein family member 10B; Ras-like protein VTS58635; Ras-related protein 17; RRP17
Background	similarity:Belongs to the small GTPase superfamily. Ras family.,

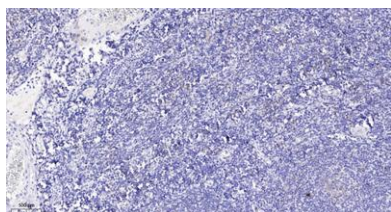




ELK Biotechnology



Western blot analysis of RASL10B Antibody. The lane on the right is blocked with the RASL10B peptide.



Immunohistochemical analysis of paraffin-embedded human tonsil. 1, Antibody was diluted at 1:200(4° overnight). 2, Tris-EDTA,pH9.0 was used for antigen retrieval. 3,Secondary antibody was diluted at 1:200(room temperature, 45min).



+86-27-59760950

ELKbio@ELKbiotech.com

www.elkbiotech.com

23-2, No.388 Gaoxin 2nd Road,Wuhan East Lake Hi-tech Development Zone, Hubei , P.R.C