



# BTF3L4 rabbit pAb

Cat No.:ES7967

For research use only

## Overview

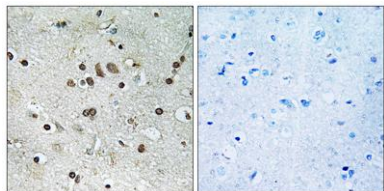
<b>Product Name</b>	BTF3L4 rabbit pAb
<b>Host species</b>	Rabbit
<b>Applications</b>	IHC;IF;ELISA
<b>Species Cross-Reactivity</b>	Human;Mouse
<b>Recommended dilutions</b>	Immunohistochemistry: 1/100 - 1/300. ELISA: 1/40000. Not yet tested in other applications.
<b>Immunogen</b>	The antiserum was produced against synthesized peptide derived from human BTF3L4. AA range:94-143
<b>Specificity</b>	BTF3L4 Polyclonal Antibody detects endogenous levels of BTF3L4 protein.
<b>Formulation</b>	Liquid in PBS containing 50% glycerol, 0.5% BSA and 0.02% sodium azide.
<b>Storage</b>	Store at -20°C. Avoid repeated freeze-thaw cycles.
<b>Protein Name</b>	Transcription factor BTF3 homolog 4
<b>Gene Name</b>	BTF3L4
<b>Cellular localization</b>	
<b>Purification</b>	The antibody was affinity-purified from rabbit antiserum by affinity-chromatography using epitope-specific immunogen.
<b>Clonality</b>	Polyclonal
<b>Concentration</b>	1 mg/ml
<b>Observed band</b>	17kD
<b>Human Gene ID</b>	91408
<b>Human Swiss-Prot Number</b>	Q96K17
<b>Alternative Names</b>	BTF3L4; Transcription factor BTF3 homolog 4; Basic transcription factor 3-like 4
<b>Background</b>	similarity:Belongs to the NAC-beta family.,similarity:Contains 1 NAC-A/B (NAC-alpha/beta) domain.,





**ELK Biotechnology**

Immunohistochemistry analysis of paraffin-embedded human brain tissue, using BTF3L4 Antibody. The picture on the right is blocked with the synthesized peptide.



+86-27-59760950

[ELKbio@ELKbiotech.com](mailto:ELKbio@ELKbiotech.com)

[www.elkbiotech.com](http://www.elkbiotech.com)

23-2, No.388 Gaoxin 2nd Road,Wuhan East Lake Hi-tech Development Zone, Hubei , P.R.C