



ADCK2 rabbit pAb

Cat No.:ES7957

For research use only

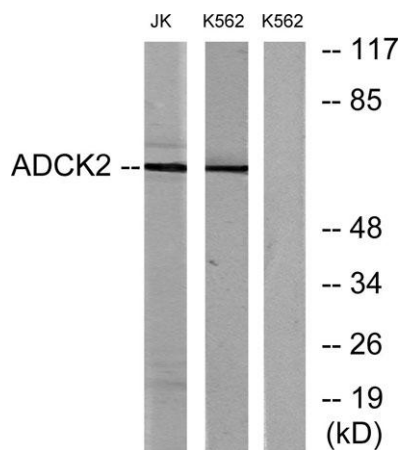
Overview

Product Name	ADCK2 rabbit pAb
Host species	Rabbit
Applications	WB;IHC;IF;ELISA
Species Cross-Reactivity	Human;Rat;Mouse;
Recommended dilutions	Western Blot: 1/500 - 1/2000. Immunohistochemistry: 1/100 - 1/300. Immunofluorescence: 1/200 - 1/1000. ELISA: 1/10000. Not yet tested in other applications.
Immunogen	The antiserum was produced against synthesized peptide derived from human ADCK2. AA range:241-290
Specificity	ADCK2 Polyclonal Antibody detects endogenous levels of ADCK2 protein.
Formulation	Liquid in PBS containing 50% glycerol, 0.5% BSA and 0.02% sodium azide.
Storage	Store at -20°C. Avoid repeated freeze-thaw cycles.
Protein Name	Uncharacterized aarF domain-containing protein kinase 2
Gene Name	ADCK2
Cellular localization	Membrane ; Single-pass membrane protein .
Purification	The antibody was affinity-purified from rabbit antiserum by affinity-chromatography using epitope-specific immunogen.
Clonality	Polyclonal
Concentration	1 mg/ml
Observed band	69kD
Human Gene ID	90956
Human Swiss-Prot Number	Q7Z695
Alternative Names	ADCK2; AARF; Uncharacterized aarF domain-containing protein kinase 2
Background	function:The function of this protein is not yet clear. It is not known if it has protein kinase activity and what type of substrate it would phosphorylate (Ser,





Thr or Tyr).,sequence caution:Aberrant splicing.,similarity:Belongs to the protein kinase superfamily. ADCK protein kinase family.,similarity:Contains 1 protein kinase domain.,



Western blot analysis of lysates from Jurkat and K562 cells, using ADCK2 Antibody. The lane on the right is blocked with the synthesized peptide.

