



Claudin-2 rabbit pAb

Cat No.:ES7952

For research use only

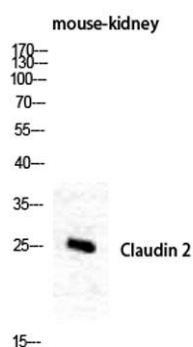
Overview

| | |
|---------------------------------|--|
| Product Name | Claudin-2 rabbit pAb |
| Host species | Rabbit |
| Applications | WB;IHC;IF;ELISA |
| Species Cross-Reactivity | Human;Mouse |
| Recommended dilutions | Western Blot: 1/500 - 1/2000. Immunohistochemistry: 1/100 - 1/300. ELISA: 1/5000. Not yet tested in other applications. |
| Immunogen | The antiserum was produced against synthesized peptide derived from human Claudin 2. AA range:181-230 |
| Specificity | Claudin-2 Polyclonal Antibody detects endogenous levels of Claudin-2 protein. |
| Formulation | Liquid in PBS containing 50% glycerol, 0.5% BSA and 0.02% sodium azide. |
| Storage | Store at -20°C. Avoid repeated freeze-thaw cycles. |
| Protein Name | Claudin-2 |
| Gene Name | CLDN2 |
| Cellular localization | Cell junction, tight junction . Cell membrane ; Multi-pass membrane protein . |
| Purification | The antibody was affinity-purified from rabbit antiserum by affinity-chromatography using epitope-specific immunogen. |
| Clonality | Polyclonal |
| Concentration | 1 mg/ml |
| Observed band | 25kD |
| Human Gene ID | 9075 |
| Human Swiss-Prot Number | P57739 |
| Alternative Names | CLDN2; PSEC0059; SP82; Claudin-2; SP82 |
| Background | This gene product belongs to the claudin protein family whose members have been identified as major integral membrane proteins localized exclusively at tight junctions. Claudins are expressed in an organ-specific manner and regulate |



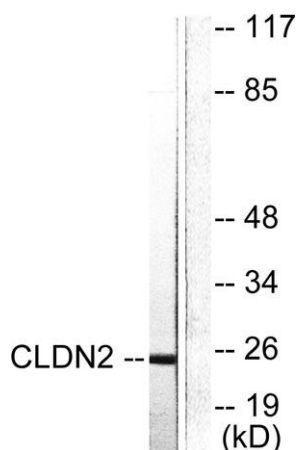
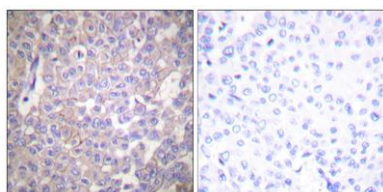


tissue-specific physiologic properties of tight junctions. This protein is expressed in the intestine. Alternatively spliced transcript variants with different 5' untranslated region have been found for this gene.[provided by RefSeq, Jan 2010],



Western Blot analysis of mouse-kidney cells using Claudin-2 Polyclonal Antibody diluted at 1:1000

Immunohistochemistry analysis of paraffin-embedded human breast carcinoma tissue, using Claudin 2 Antibody. The picture on the right is blocked with the synthesized peptide.



Western blot analysis of lysates from NIH/3T3 cells, using Claudin 2 Antibody. The lane on the right is blocked with the synthesized peptide.

