



StARD13 rabbit pAb

Cat No.:ES7945

For research use only

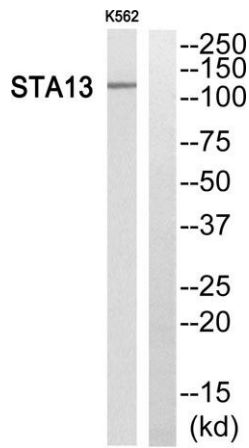
Overview

Product Name	StARD13 rabbit pAb
Host species	Rabbit
Applications	WB;ELISA;IHC
Species Cross-Reactivity	Human;Mouse
Recommended dilutions	WB 1:500-2000;IHC-p 1:50-300; ELISA 2000-20000
Immunogen	The antiserum was produced against synthesized peptide derived from human STA13. AA range:101-150
Specificity	StARD13 Polyclonal Antibody detects endogenous levels of StARD13 protein.
Formulation	Liquid in PBS containing 50% glycerol, 0.5% BSA and 0.02% sodium azide.
Storage	Store at -20°C. Avoid repeated freeze-thaw cycles.
Protein Name	StAR-related lipid transfer protein 13
Gene Name	STARD13
Cellular localization	Cytoplasm. Membrane; Peripheral membrane protein; Cytoplasmic side. Mitochondrion membrane; Peripheral membrane protein; Cytoplasmic side. Lipid droplet.
Purification	The antibody was affinity-purified from rabbit antiserum by affinity-chromatography using epitope-specific immunogen.
Clonality	Polyclonal
Concentration	1 mg/ml
Observed band	125kD
Human Gene ID	90627
Human Swiss-Prot Number	Q9Y3M8
Alternative Names	STARD13; DLC2; GT650; StAR-related lipid transfer protein 13; 46H23.2; Deleted in liver cancer 2 protein; DLC-2; Rho GTPase-activating protein; START domain-containing protein 13; StARD13
Background	This gene encodes a protein which contains an N-terminal sterile alpha motif (SAM) for



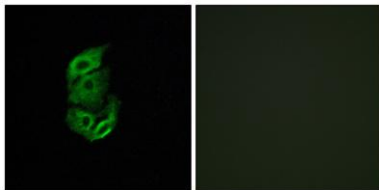


protein-protein interactions, followed by an ATP/GTP-binding motif, a GTPase-activating protein (GAP) domain, and a C-terminal STAR-related lipid transfer (START) domain. It may be involved in regulation of cytoskeletal reorganization, cell proliferation, and cell motility, and acts as a tumor suppressor in hepatoma cells. The gene is located in a region of chromosome 13 that is associated with loss of heterozygosity in hepatocellular carcinomas. Alternatively spliced transcript variants encoding different isoforms have been described for this gene. [provided by RefSeq, Aug 2011],



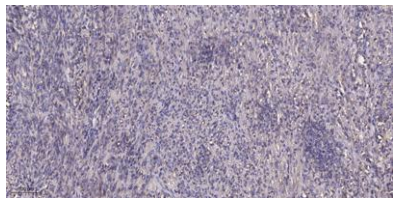
Western blot analysis of STA13 Antibody. The lane on the right is blocked with the STA13 peptide.

Immunofluorescence analysis of A549 cells, using STA13 Antibody. The picture on the right is blocked with the synthesized peptide.





ELK Biotechnology



Immunohistochemical analysis of paraffin-embedded human Colon cancer. 1, Antibody was diluted at 1:200(4° overnight). 2, Tris-EDTA,pH9.0 was used for antigen retrieval. 3,Secondary antibody was diluted at 1:200(room temperature, 45min).



+86-27-59760950

ELKbio@ELKbiotech.com

www.elkbiotech.com

23-2, No.388 Gaoxin 2nd Road,Wuhan East Lake Hi-tech Development Zone, Hubei , P.R.C