



# ERI1 rabbit pAb

Cat No.:ES7939

For research use only

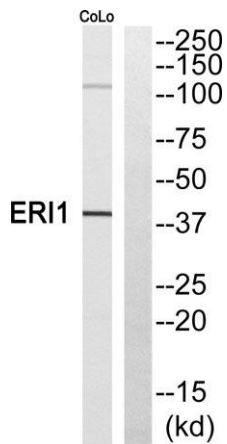
## Overview

<b>Product Name</b>	ERI1 rabbit pAb
<b>Host species</b>	Rabbit
<b>Applications</b>	WB;ELISA
<b>Species Cross-Reactivity</b>	Human;Mouse;Rat
<b>Recommended dilutions</b>	Western Blot: 1/500 - 1/2000. ELISA: 1/5000. Not yet tested in other applications.
<b>Immunogen</b>	The antiserum was produced against synthesized peptide derived from human ERI1. AA range:261-310
<b>Specificity</b>	ERI1 Polyclonal Antibody detects endogenous levels of ERI1 protein.
<b>Formulation</b>	Liquid in PBS containing 50% glycerol, 0.5% BSA and 0.02% sodium azide.
<b>Storage</b>	Store at -20°C. Avoid repeated freeze-thaw cycles.
<b>Protein Name</b>	3'-5' exoribonuclease 1
<b>Gene Name</b>	ERI1
<b>Cellular localization</b>	Cytoplasm . Nucleus . Nucleus, nucleolus .
<b>Purification</b>	The antibody was affinity-purified from rabbit antiserum by affinity-chromatography using epitope-specific immunogen.
<b>Clonality</b>	Polyclonal
<b>Concentration</b>	1 mg/ml
<b>Observed band</b>	37kD
<b>Human Gene ID</b>	90459
<b>Human Swiss-Prot Number</b>	Q8IV48
<b>Alternative Names</b>	ERI1; 3'EXO; THEX1; 3'-5' exoribonuclease 1; 3'-5' exonuclease ERI1; Eri-1 homolog; Histone mRNA 3'-end-specific exoribonuclease; Histone mRNA 3'-exonuclease 1; Protein 3'hExo; HEXO cofactor: Binds 2 magnesium ions per subunit.,enzyme regulation: Although it can bind simultaneously with SLBP to the 3'-end of histone mRNA, the presence of SLBP prevents the
<b>Background</b>	

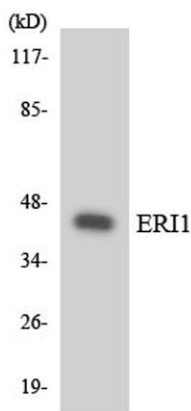




exonuclease activity, function: RNA exonuclease that binds to the 3'-end of histone mRNAs and probably degrades them, suggesting that it plays an essential role in histone mRNA decay after replication. Also able to degrade the 3'-overhangs of short interfering RNAs (siRNAs) in vitro, suggesting a possible role as regulator of RNA interference (RNAi). Required for 5.8S rRNA 3'-end processing., sequence caution: Translated as Leu., similarity: Contains 1 exonuclease domain., similarity: Contains 1 SAP domain., subunit: Binds with high affinity to the stem-loop structure of replication-dependent histone pre-mRNAs. Requires the 5'-ACCCA-3' sequence present in stem-loop structure. Able to bind other mRNAs. Binds to 40S and 60S ribosomal subunits and to 80S assembled ribosomes. Also binds to 5.8s ribosomal RNA.,



Western blot analysis of ERI1 Antibody. The lane on the right is blocked with the ERI1 peptide.



Western blot analysis of the lysates from HUVEC cells using ERI1 antibody.

