



# CEACAM21 rabbit pAb

Cat No.:ES7935

For research use only

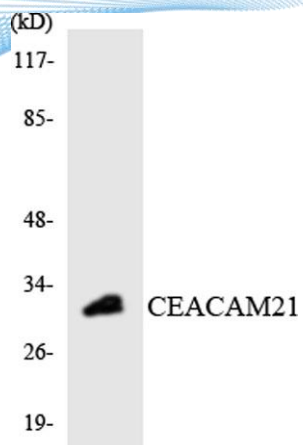
## Overview

<b>Product Name</b>	CEACAM21 rabbit pAb
<b>Host species</b>	Rabbit
<b>Applications</b>	WB;ELISA
<b>Species Cross-Reactivity</b>	Human
<b>Recommended dilutions</b>	Western Blot: 1/500 - 1/2000. ELISA: 1/10000. Not yet tested in other applications.
<b>Immunogen</b>	The antiserum was produced against synthesized peptide derived from human CEACAM21. AA range:171-220
<b>Specificity</b>	CEACAM21 Polyclonal Antibody detects endogenous levels of CEACAM21 protein.
<b>Formulation</b>	Liquid in PBS containing 50% glycerol, 0.5% BSA and 0.02% sodium azide.
<b>Storage</b>	Store at -20°C. Avoid repeated freeze-thaw cycles.
<b>Protein Name</b>	Carcinoembryonic antigen-related cell adhesion molecule 21
<b>Gene Name</b>	CEACAM21
<b>Cellular localization</b>	Membrane ; Single-pass type I membrane protein .
<b>Purification</b>	The antibody was affinity-purified from rabbit antiserum by affinity-chromatography using epitope-specific immunogen.
<b>Clonality</b>	Polyclonal
<b>Concentration</b>	1 mg/ml
<b>Observed band</b>	32kD
<b>Human Gene ID</b>	90273
<b>Human Swiss-Prot Number</b>	Q3KPI0
<b>Alternative Names</b>	CEACAM21; Carcinoembryonic antigen-related cell adhesion molecule 21
<b>Background</b>	similarity:Belongs to the immunoglobulin superfamily. CEA family.,similarity:Contains 1 Ig-like C2-type (immunoglobulin-like) domain.,





**ELK Biotechnology**



Western blot analysis of the lysates from HT-29 cells using CEACAM21 antibody.



+86-27-59760950

[ELKbio@ELKbiotech.com](mailto:ELKbio@ELKbiotech.com)

[www.elkbiotech.com](http://www.elkbiotech.com)

23-2, No.388 Gaoxin 2nd Road,Wuhan East Lake Hi-tech Development Zone, Hubei , P.R.C