



BTBD6 rabbit pAb

Cat No.:ES7931

For research use only

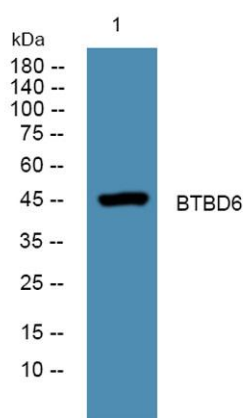
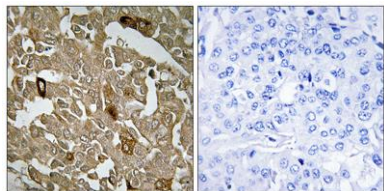
Overview

Product Name	BTBD6 rabbit pAb
Host species	Rabbit
Applications	WB;IHC;IF;ELISA
Species Cross-Reactivity	Human;Mouse
Recommended dilutions	Western Blot: 1/500 - 1/2000. Immunohistochemistry: 1/100 - 1/300. ELISA: 1/10000. Not yet tested in other applications.
Immunogen	The antiserum was produced against synthesized peptide derived from human BTBD6. AA range:91-140
Specificity	BTBD6 Polyclonal Antibody detects endogenous levels of BTBD6 protein.
Formulation	Liquid in PBS containing 50% glycerol, 0.5% BSA and 0.02% sodium azide.
Storage	Store at -20°C. Avoid repeated freeze-thaw cycles.
Protein Name	BTB/POZ domain-containing protein 6
Gene Name	BTBD6
Cellular localization	Cytoplasm . Found in punctated bodies in the cytoplasm. .
Purification	The antibody was affinity-purified from rabbit antiserum by affinity-chromatography using epitope-specific immunogen.
Clonality	Polyclonal
Concentration	1 mg/ml
Observed band	45kD
Human Gene ID	90135
Human Swiss-Prot Number	Q96KE9
Alternative Names	BTBD6; BDPL; BTB/POZ domain-containing protein 6; Lens BTB domain protein
Background	similarity:Contains 1 BTB (POZ) domain.,tissue specificity:Expressed in lens.,





Immunohistochemistry analysis of paraffin-embedded human breast carcinoma tissue, using BTBD6 Antibody. The picture on the right is blocked with the synthesized peptide.



Western blot analysis of lysates from SH-SY5Y cells, primary antibody was diluted at 1:1000, 4° over night

